

# Field Research Software™

Classic GrainGage™

Reference Guide

A stylized, light gray background graphic depicting a corn cob and its stalks. The corn cob is shown in a perspective view, with individual kernels represented by a grid of rounded rectangles. The stalks are shown as bundles of parallel lines extending from the base of the cob.

Juniper Systems and Allegro Field PC are registered trademarks of Juniper Systems, Inc. in the United States. Allegro CX, Archer Field PC, Field Research Software, FRS, FRS Note Taking, FRS Plot Harvest Data Modules, GrainGage, Classic GrainGage, USB/Power Dock, and the Juniper Systems logos are trademarks of Juniper Systems, Inc.

Reproduction of this reference guide without the written permission of Juniper Systems, Inc. is not allowed.

Information in this document is subject to change without notice.  
© October 2008, Juniper Systems, Inc. All rights reserved.

P/N 15306-01

# Contents

	<b>Software License Agreement</b>	<b>5</b>
<b>1</b>	<b>Introduction to FRS <i>Harvest</i></b>	<b>7</b>
	Getting Started: How to install FRS Harvest .....	9
<b>2</b>	<b>Setting Up FRS <i>Harvest</i><sup>™</sup></b>	<b>11</b>
<b>3</b>	<b>Calibrating and Preparing for Harvest</b>	<b>15</b>
	To verify weight calibrations.....	16
	Moisture Sensor .....	20
	Timers .....	34
	Actuators.....	35
	Setup File.....	36
<b>4</b>	<b>Diagnostics Menu</b>	<b>39</b>
	Load Cell.....	41
	Moisture.....	44
	LED Codes on the EM Grain Moisture Sensor .....	45
	Level Detect Sensor.....	48
	Actuators.....	49
	Print Calibrations.....	50
<b>5</b>	<b>Creating Traits and Templates for Harvest</b>	<b>51</b>
	Create harvest traits .....	52
	Create a Harvest Template.....	55
<b>6</b>	<b>Harvest Data Collection</b>	<b>59</b>
	Preparing to collect harvest data .....	60
	Harvest Sequence .....	64
	Viewing your harvest data using the List Screen ...	68

<b>7</b>	<b>Exporting Data</b>	<b>69</b>
	Extracting collected data.....	70
	Backup Log for Harvest Modules .....	72
<b>8</b>	<b>General Care and Maintenance</b>	<b>75</b>
	Classic GrainGage Regular Maintenance .....	76
	Load Cell Replacement Procedures .....	84
	GrainGage Chamber Installation.....	92
	Return for Repair Procedure.....	96
	<b>Appendix</b>	<b>99</b>
	Appendix A: Warranty .....	100
	Appendix B: Mounting Diagrams.....	104
	Appendix C: Cable Wiring Diagrams for the HM-401 .....	106
	Appendix D: Cable Wiring Diagrams for the HM-800.....	122
	<b>Index</b>	<b>137</b>

# **Software License Agreement**

## **Manufacturer Agreement**

This Software License Agreement is between the end-user and Juniper Systems, Inc. (manufacturer). Please read the following terms and conditions before using Field Research Software with a handheld device. This agreement supersedes any prior agreement, written or oral.

## **Granting of License**

The manufacturer grants, under the following terms and conditions, a non-exclusive license to use Field Research Software.

## **Ownership**

Juniper Systems, Inc. retains the title to and ownership of the software plus any copies made of the software.

## **Software Use**

The FRS license and registration are only valid on one handheld device per licensed copy. To purchase additional license copies, contact the manufacturer. You may make one copy of the software to be stored as a backup.

## **Copyright**

Field Research Software is copyrighted by Juniper Systems, Inc. You may not rent, lease, lend, sub-license, modify, or disassemble this program. The associated documentation may not be reproduced without written permission.

## **Term**

This License is in effect until terminated. It will be terminated under one of the following conditions:

- You destroy all copies of the software and documentation.
- You return all copies of the software and documentation to us.
- You fail to comply with any provisions of the License Agreement.

## **Acceptance or Disagreement**

Use of the software in any manner indicates your acceptance and acknowledgment of the terms and conditions of this agreement. If you do not agree with any of the terms and conditions, do not use the software. Return the disk and documentation to the manufacturer. If the software was installed on the mobile device at the factory, you must delete it.



CHAPTER 1  
**INTRODUCTION TO  
FRS *HARVEST***

Getting Started: How to install FRS *Harvest*

# Introduction to FRS *Harvest*

---

Designed by seed researchers, the Windows CE based Field Research Software™ (FRS) helps seed researchers and agriculture scientists perform data collection tasks on research plots.

The Classic GrainGage™ is employed on combines to record weight, moisture, and test weight on grains. It aids research scientists by automating data collection. This Field Reference Guide helps you through the setup, calibration, and harvest with the Classic GrainGage.

This guide also outlines the operation of the Field Research Software Harvest module. The FRS Harvest module is a component of the FRS Note Taking™ application. This Field Reference Guide assumes the user is familiar with the operation of FRS Note Taking. For more information, see the FRS Note Taking Field Reference Guide.

FRS software is designed so you can either tap on the touch screen with a stylus or use the keyboard. Function keys, arrow keys, the Enter key, and the Tab key are designed to help you move the cursor through the software and make selections.



*Figure 1-1: Classic GrainGage*

## **Getting Started: How to install FRS Harvest**

For instructions on installing the latest FRS Harvest software onto your handheld, follow these steps:

1. Visit our website at ***www.junipersys.com***.
2. Select ***Support***, then select ***Downloads*** under the HarvestMaster menu.
3. Choose the version of software from the appropriate menu.
4. If downloading a .CAB file, copy this file to the desktop of the handheld.
5. Click on the .CAB and follow the prompts for installation.

# Chapter 1

The background of the page is black. In the upper right, there is a white, hand-drawn oval shape containing the chapter title. The rest of the page is filled with a dark gray, stylized illustration of a fishnet mesh, with a fishing net visible in the lower right corner.

CHAPTER 2  
**SETTING UP FRS**  
***HARVEST™***

# Setting Up FRS Harvest™

Follow these steps to enable your Classic GrainGage to work with FRS *Harvest*.

1. Make sure the cables between the control device and the handheld are set up properly so the software and hardware can communicate. For details about cable placement, see *Appendix C: Cable Wiring for the HM400* and *Appendix D: Cable Wiring for the HM800*.
2. From the Main FRS Screen, select Setup (F3).

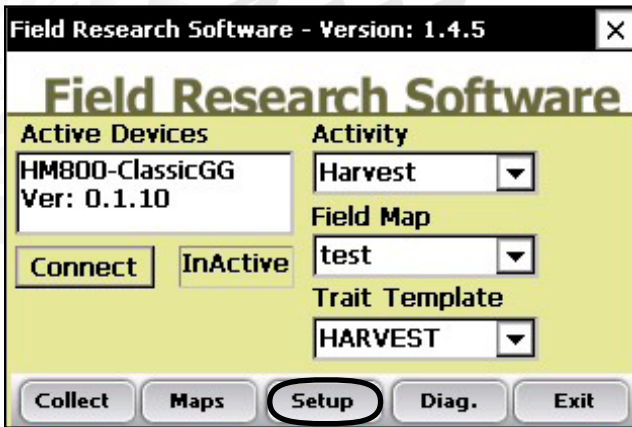


Figure 2-1: Choose Setup on the Main FRS Screen

3. The Setup menu appears. Tap on the plus sign [+] next to **System** or use the right arrow to expand the System option.



*Figure 2-2: Setup menu*

4. Select **Manage Devices** either by double-tapping it or by using the up or down arrow keys and pressing the Enter key.

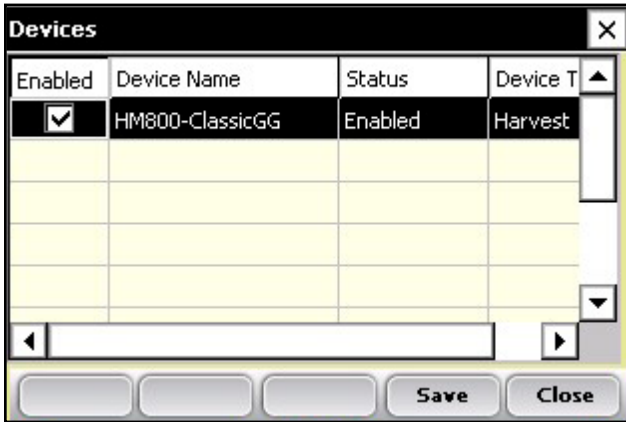


*Figure 2-3: Setup menu with Manage Devices selected*

## Chapter 2

5. In the Devices screen shown below, enable the Classic GrainGage by tapping on the appropriate check box.

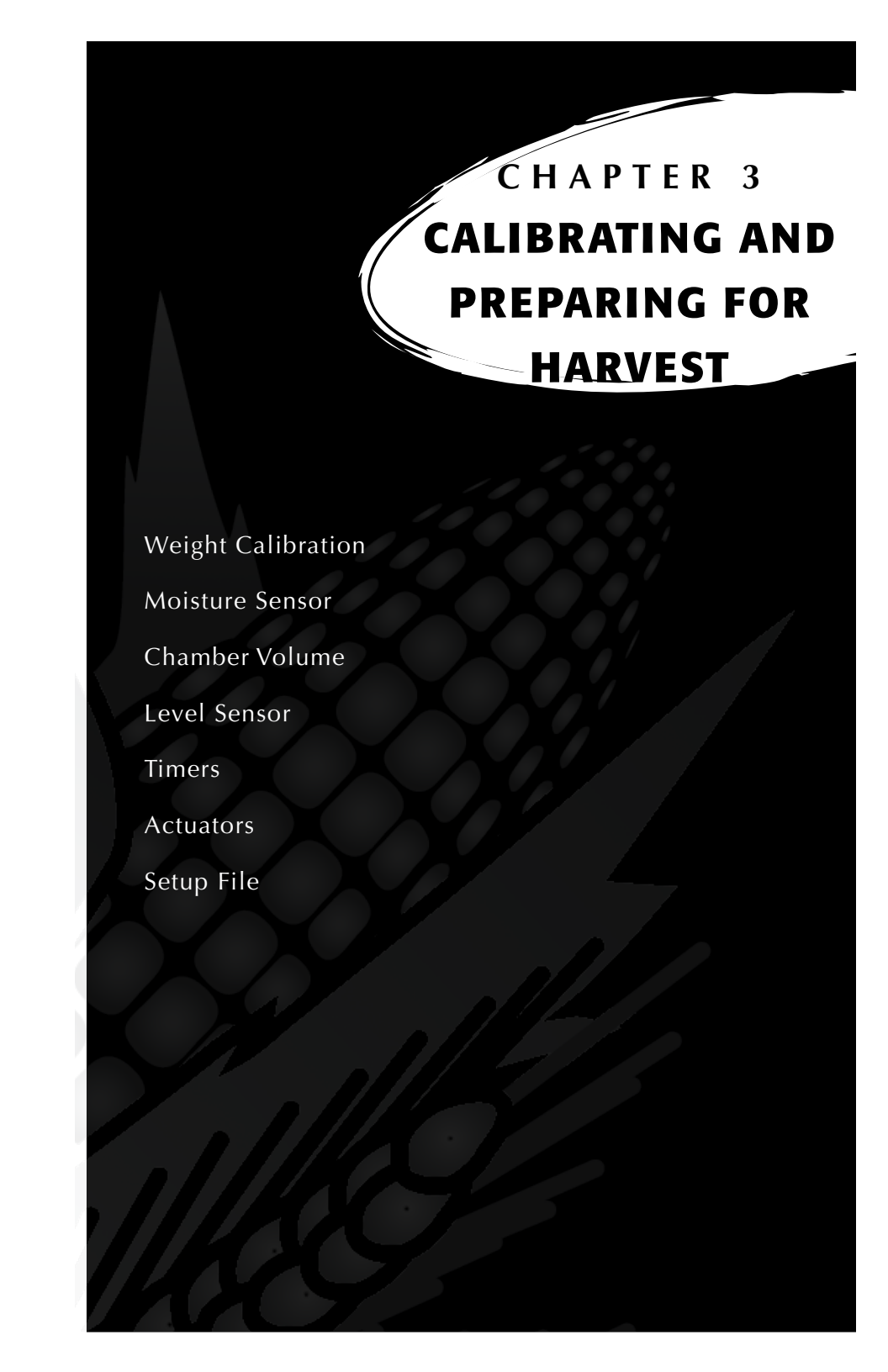
**Note:** Only one device can be enabled at a time.



**Figure 2-4: Devices screen showing the Classic as enabled**

6. Press **Save** (F4). The software begins to load and checks to see if hardware devices are connected. Wait until the software has finished loading before proceeding to the next chapter.

FRS software has an emulation mode to allow software familiarization without being connected to a hardware device.



# CHAPTER 3

## **CALIBRATING AND PREPARING FOR HARVEST**

Weight Calibration

Moisture Sensor

Chamber Volume

Level Sensor

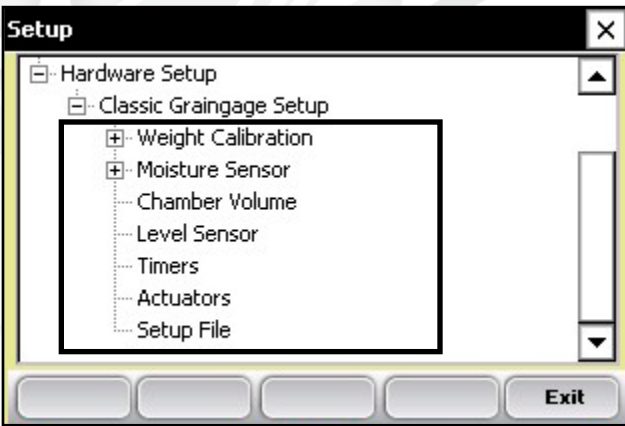
Timers

Actuators

Setup File

# Calibrating and Preparing the Classic GrainGage for Harvest

This chapter explains how to calibrate and set up your Classic GrainGage to work with FRS Harvest. The sections below describe the first- and second-level menu options in the Setup menu under Classic Graingage Setup.

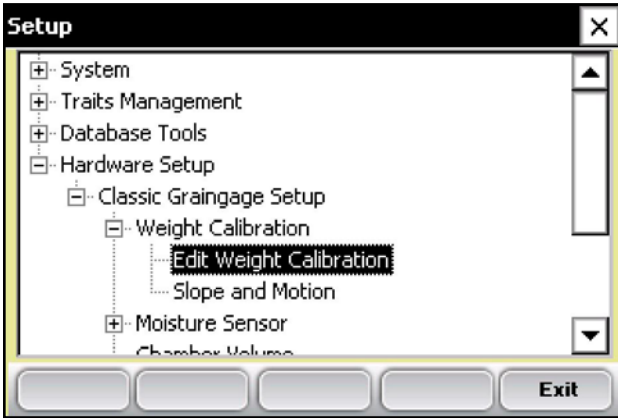


*Figure 3-1: This chapter explains the options under Classic Graingage Setup in the Setup menu*

## **To verify weight calibrations.**

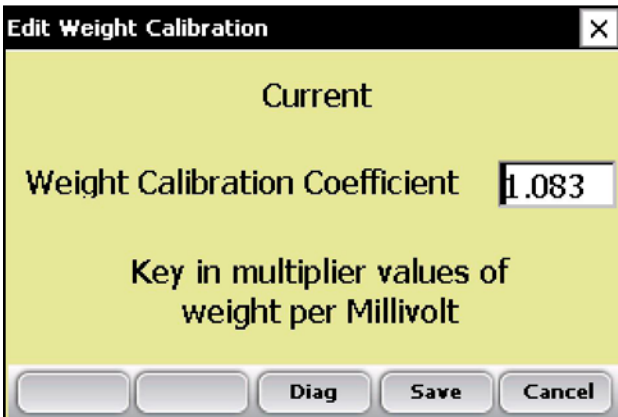
In diagnostics select Load cell. Place known weight of approximately 5 lbs on weigh pan as close to center of the weigh pan as possible. Record weigh reading and if different from known weight follow the following steps to recalibrate weight reading.

1. From the main FRS screen, select **Setup** (F3) > **Hardware Setup** > **Classic Graingage** > **Weight calibration** > **Edit Weight Calibration**.



**Figure 3-2: Setup screen with Edit Weight Calibration**

2. Record Weight Calibration Coefficient value.



**Figure 3-3: Edit Weight Calibration screen**

3. Adjust the weight calibration using the following equations.

## Chapter 3

For HM800 use the following equation and example.

**New Weight Cal Coefficient =  
Actual Weight/Measured Weight \* Current Coefficient**

**Example: 5.187lbs/9.63 lbs \* 2.01 = 1.083**

For the HM400 use the following equation

**New Weight Cal Coefficient =  
Measured Weight/Actual Weight \* Current Coefficient**

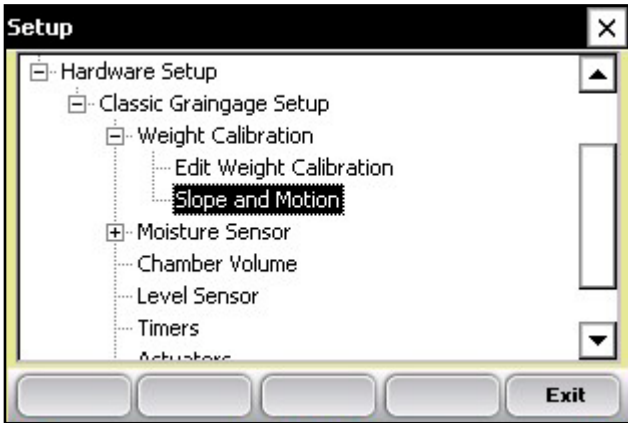
4. Replace the current Weight Calibration Coefficient with the calculated value.
5. In diagnostics from the main screen select Load Cell and Tare weight.
6. Place known weight on weigh pan where it was placed previously and verify weight reading being displayed.

**Note:** Typical coefficient for HM400 GrainGages is 2.00.  
For HM800 typical coefficient is 1.08

### *Slope and Motion*

The Slope and Motion Sensor refers to patented technology used to eliminate errors created by combine vibrations. The sensor lets you collect weight readings while the combine is in motion. To set the sensor, follow these steps:

1. From the Setup menu, select **Hardware Setup** > **Classic Graingage Setup** > **Weight Calibration**, then arrow down or select **Slope and Motion**.



**Figure 3-4: Setup menu with Slope and Motion selected**

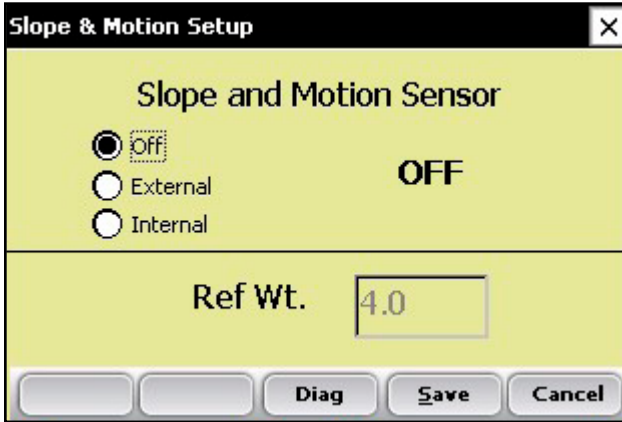
2. **Important:** Check to make sure—
  - the shipping stop on the Slope and Motion Sensor is screwed out

Shipping stop screwed out as far as it will go.



- the combine is on a level surface with the thresher
  - the motor is turned off
3. Key in the reference weight with the combine still and level. The default value to enable the Slope and Motion Sensor is 4.0 for the reference weight. For metric enter the equivalent of 4.0 lbs or 1.814 kg.

**Note:** Lighter weights are available for some applications. If the sensor is equipped with a lighter weight, be sure to enter the weight written on the front of the box.



**Figure 3-5: Slope and Motion screen**

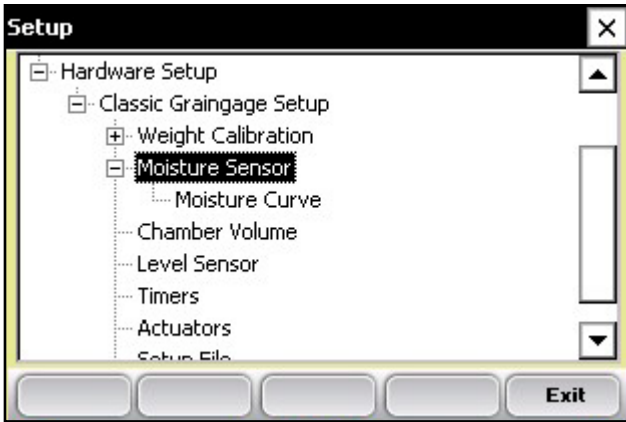
4. After selecting the External Radio button, Press **Save** (F4).
5. For Internal Slope and Motion, Select the Internal Radio button, then Press Save (F4).

**Note:** The Internal Slope and Motion is only available with HM800 Classic GrainGages.

6. To disable the Slope and Motion Sensor, select Off then press **Save** (F4).

### Moisture Sensor

The Classic GrainGage system uses the EM Grain Moisture sensor for moisture. To view or modify the moisture curves select **Moisture Sensor: Moisture Curve**.



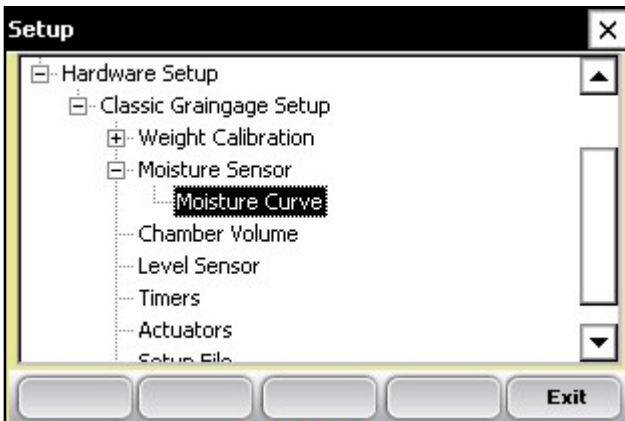
*Figure 3-6: Setup screen with EM Sensor option selected*

## **Moisture Curve**

### *Editing a moisture curve*

To edit a moisture curve, follow these steps.

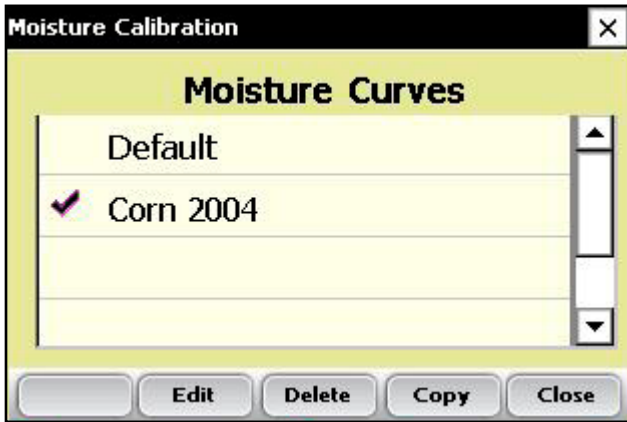
1. Select **Setup** (F3), then choose **Hardware Setup** > **Classic Graingage Setup** > **EM Sensor** > **Moisture curve**.



*Figure 3-7: Setup screen with Moisture Curve screen selected*

The Moisture Curve screen appears, listing any existing moisture curves and giving you the option to edit, delete, or copy moisture curves. Each of these actions is described in more detail below.

**Note:** The check mark next to one of the curves indicates the curve most recently used.

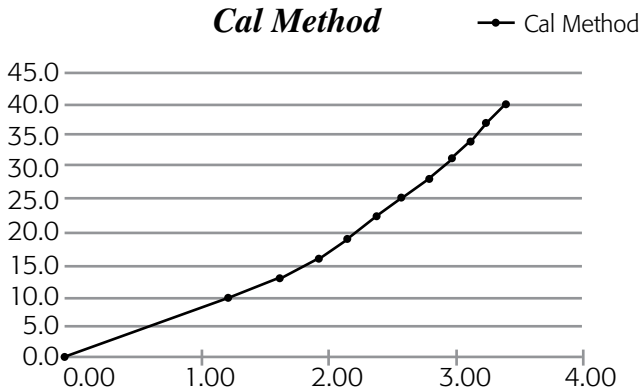


**Figure 3-8: Moisture Calibration main screen**

The Moisture Calibration screen lists all moisture curves that have been created. One of the curves is a **Default** grain moisture sensor curve that comes with FRS. It can be copied but not modified. The default curve consists of a set of known data points, which the system uses when making the moisture measurement on a sample of grain. When plotted in a spreadsheet, the default curve appears like the graph (see Figure 3-19).

### Default Moisture Curve for EM Sensor

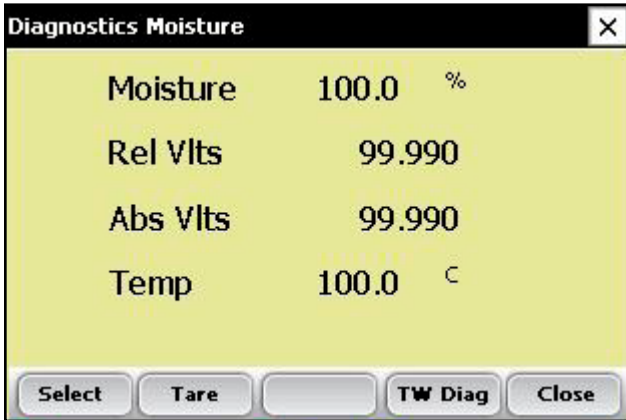
Moist %	MV
0.00%	0.00
10.00%	1.22
13.00%	1.61
16.00%	1.93
19.00%	2.19
22.00%	2.41
25.00%	2.60
28.00%	2.77
31.00%	2.93
34.00%	3.07
37.00%	3.19
40.00%	3.30



**Figure 3-9: Default moisture curve as it appears in a spreadsheet (top) and as it appears in a graph (bottom)**

To check moisture choose **Diags** (F4) on the main FRS screen then select **Moisture**. Record the Rel VItS and the Moisture (%) from each sample that has been cycled

through the grain gage. Compare the Moisture (%) reading with a known percent moisture from a standard.



**Figure 3-10: Diagnostics Moisture screen**

2. Adjust the moisture curve by adjusting individual points in the curve or by adjusting the value of the Calibration Temperature. The following sections explain how to make adjustments to individual points, how to adjust the moisture grain temperature, how to delete a curve, and how to copy a curve.

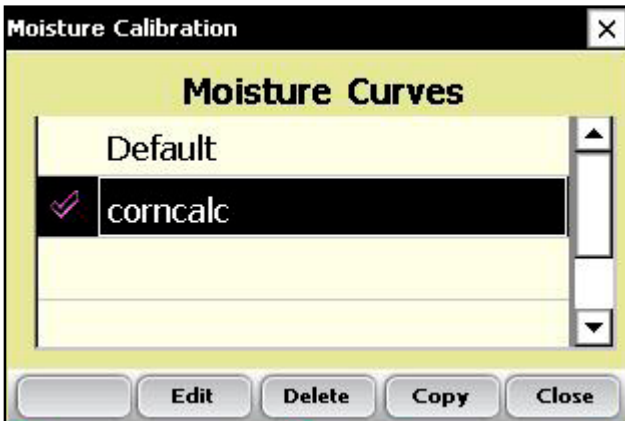
**Note:** We recommend creating a different moisture curve for each different grain type. A custom spreadsheet to aid in adjusting your moisture calibration can be found on the Juniper Systems web site. This spreadsheet helps you adjust the points on the moisture curve to match your system.

To access the spreadsheet, go to [www.junipersys.com](http://www.junipersys.com) and choose **Support > HarvestMaster > FAQs > Moisture Sensor (EM, High Capacity GrainGage, Classic GrainGage)**. Choose the link called **EM Moisture Sensor Calibration** to view the spreadsheet.

### *Adjusting Individual Points*

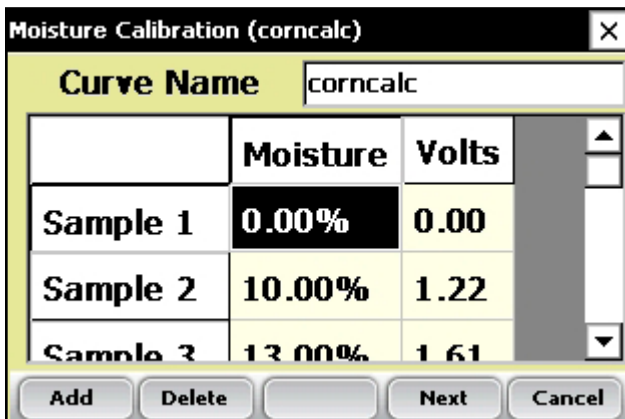
To adjust individual points, follow these steps:

1. Select the moisture curve you want to edit and press **Edit** (F2).



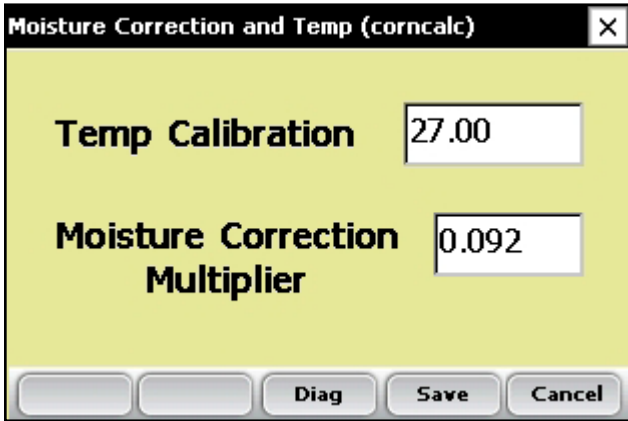
*Figure 3-11: Moisture Calibration main screen*

2. Select the percent or volts you want to adjust, and enter the new values.



*Figure 3-12: You can edit Moisture or Volts for a sample*

3. Press **Next** (F4) to save your changes to the moisture curve and advance to the Moisture Correction and Temperature screen.



**Figure 3-13: Moisture Calibration Correction and Temperature screen**

**We recommend setting Temp Calibration to the current temp reading found in the diagnostics menu.**

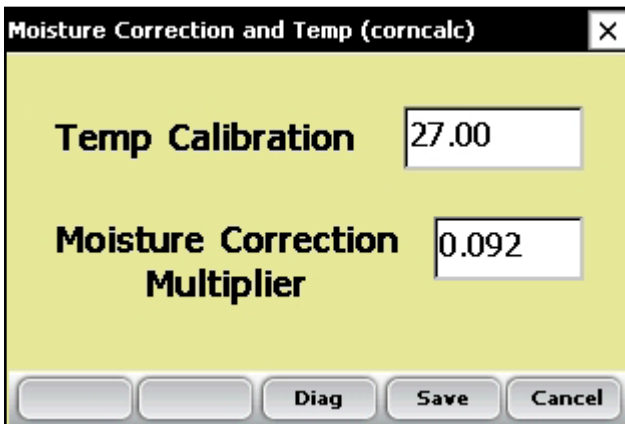
**Note:** When grain moisture readings are harvested at a different temperature than the temperature during the original calibration, the grain moisture measurement needs to be corrected to adjust for this difference. The Classic Graingage System automatically makes this moisture correction based on the Temp Calibration and Moisture Correction Multiplier found in the screen above.

4. When you are finished editing your moisture curve, press **Save** (F4) to exit and save your changes.

### *Adjusting the Grain Moisture Temperature*

You can also use the temperature calibration to make small adjustments to moisture readings taken by the system. To change the temperature calibration to match your grain samples, follow these steps:

1. From the Main FRS screen, Select **Setup** (F3), then **Hardware Setup** > **Classic Graingage Setup** > **EM Sensor (Moisture)** > **Moisture Curve**.
2. Select a moisture curve then select **Edit** (F2) or **Copy** (F4).
3. Tap **Next** (F4). The Moisture Correction and Temperature screen appears.



Moisture Correction and Temp (corncalc)

Temp Calibration 27.00

Moisture Correction Multiplier 0.092

Diag Save Cancel

**Figure 3-14: Moisture Correction and Temperature screen for the “corncalc” curve**

Even though the moisture correction is automatic, changing the Temp Calibration shifts all moisture readings up or down, depending on if the temperature was increased or decreased. If

you find that your new moisture reading is consistently high over the whole range, you can lower the calibration temperature to decrease all moisture readings. You can also raise the calibration temperature if your moisture is consistently too low. This is an easy way to fine-tune the moisture curve after calibration.

Follow these steps to calculate the proper temperature adjustment:

1. If the Classic provides a different moisture value than your actual moisture value (e.g., 19.5% instead of 18.5%) and you'd like to adjust it, use this formula to figure out the calibration value:

$$\frac{(\text{Actual Moisture} - \text{Classic Moisture})}{\text{Moisture Correction Multiplier}} = \text{Mstr. Temperature Calibration}$$

$$\text{Example: } 18.5\% - 19.5\% / 0.092 = -10.87 \text{ C}$$

2. Next, add this value to your existing temperature.

**Note:** If the calibration value you calculated in Step 1 is negative as in the example above, keep the negative sign.

In this example, assume the existing temperature calibration is 27 C:

$$\text{Temp Calibration} + \text{Mstr Temp Cal} = \text{New Temp Calibration}$$

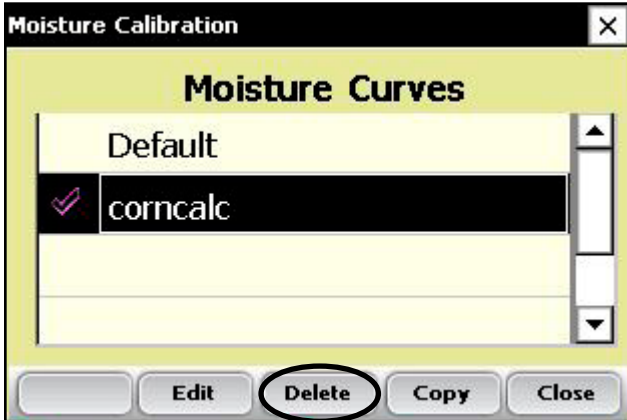
$$\text{Example: } 27.0 + (-10.87) = 16.13$$

3. Save any changes you made to the settings on the Moisture Correction and Temperature screen by pressing **Save** (F4). You can check the moisture calibration by pressing **Diag** (F3) before saving your changes.

### *Deleting a Curve*

The **Delete** option in the Moisture Curve menu allows you to remove unwanted moisture curves. To delete an unwanted moisture curve, follow these steps:

1. Select the curve you want to delete and press **Delete** (F3).



**Figure 3-15: Delete a moisture curve by selecting it and tapping Delete (F3)**

2. Confirm the delete by tapping Yes or No.

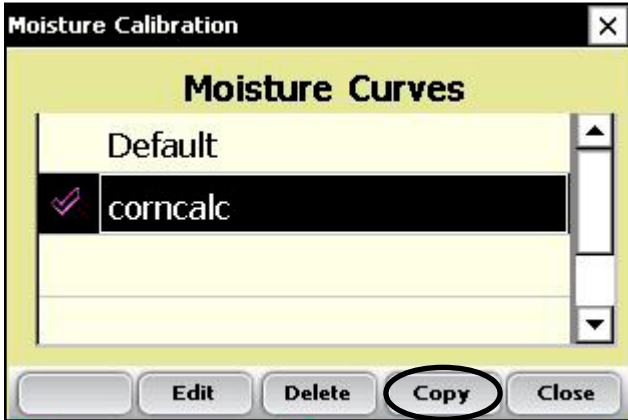


**Figure 3-16: Warning screen requires you to choose Yes or No**

### *Copying a Curve*

The Default Moisture cannot be modified. To make changes to this curve you must first make a copy of it. Follow these steps to copy a curve:

1. Select the moisture curve you want to copy or rename and then press **Copy** (F4).
2. Type in the new name of the moisture curve, make any desired changes, then press **Next** (F4).
3. Press **Save** (F4) to save the file and exit the screen.



*Figure 3-17: Copy a moisture curve by selecting it and tapping Copy (F4)*

### **Test Weight Chamber Volume**

To view or change the test weight chamber volume follow these steps:

1. Choose Setup (F3) on the main FRS screen, then select Hardware **Setup** > **Classic GrainGage Setup** > **Chamber Volume**.

2. The test weight chamber volume is used in the calculation of test weight of the grain sample. Default values for the chamber volume is as follows

<b>Chamber Size</b>	<b>Cubic Inches</b>	<b>Cubic cm.</b>
3.5 liter	209 cu inches	3441
1.5 liter	89 cu inches	1458

3. To verify test weight accuracy take a grain sample and verify test weight from a know test weight measurement device. Cycle the grain sample through the GrainGage to get a measured test weight. If the test weight measured by the GrainGage does not match the test weight from a standard the chamber volume can be adjusted.
4. To adjust the test weight reading from the GrainGage use the following formula

$$\text{New Chamber Volume} = \text{measure test weight/actual test weight} * \text{chamber volume}$$

$$\text{Example: } 56.2 \text{ lbs/bu} / 58.8 * 89 = 85 \text{ cu inches.}$$

Type the new test weight chamber volume into the text box. For metric conversion the test chamber and test weight should be in cu cm and kg/hl.

### Level Sensor

To view or change the settings of the level detect sensor, follow these steps:

1. Choose **Setup** (F3) on the main FRS screen, then select **Hardware Setup** > **Classic Graingage Setup** > **Level Sensor**.

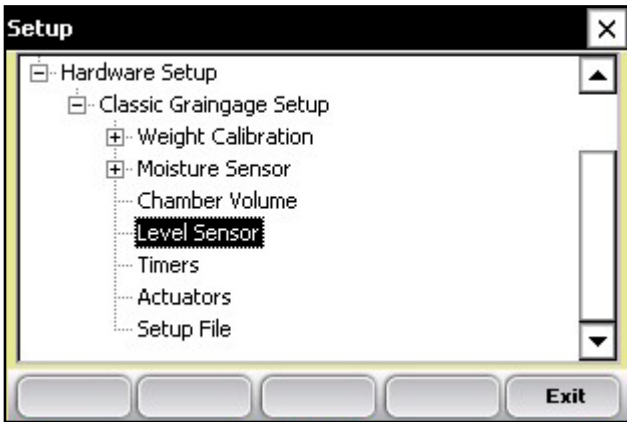


Figure 3-18: Choose Level Sensor from the Setup menu

The Level Detect Sensor Settings screen appears (see Figure 3-19).

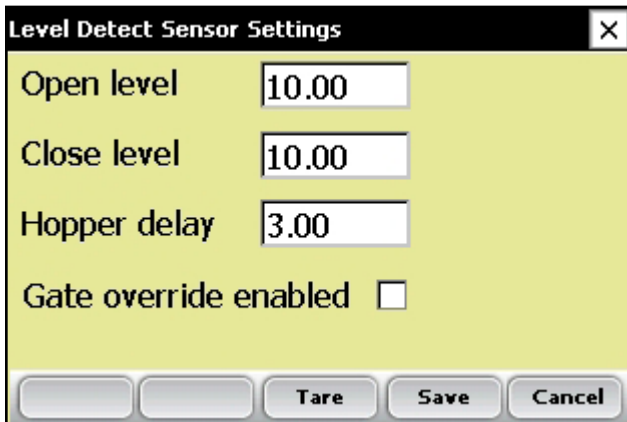


Figure 3-19: Level Detect Sensor Settings main screen

2. The GrainGage uses a level sensor to determine when to initiate the cycling of the GrainGage. The Open and Close levels are settings that determine the amount of grain in the hopper needed to trigger the GrainGage to cycle. The higher the level setting the more grain required to start the cycle sequence.

**Note:** Typical values for an HM800 Classic GrainGage are to set both levels at 10 while values for an HM400 GrainGage are 3.

3. As grain flows into the hopper it fills around the level detect. When the grain gets high enough to trip the Open Level triggers the hopper door opens. The grain has to fill up the middle or test chamber and fill up the hopper to trigger the Close level in order for the hopper door to close.

### ***Hopper Delay***

The Hopper Delay setting is a timer used to delay the opening of the hopper door the very first time the Open Level has been triggered. This allows more grain to fill the hopper so that the close level detect will be triggered as soon as the hopper opens. This minimized excessive packing of grain during this first cycle.

For example: if the hopper delay is set to 3, the GrainGage will wait three seconds after the level detect has been triggered the open level before the gate will open.

## Timers

The Timer screen is used to adjust various timers used with the system. Each of these timers can be adjusted using the Timer Setup screen, which is available by choosing Setup (F3) from the main FRS screen then tapping **Hardware System > Classic Graingage Setup > Timers**.



Figure 3-20: Timer Setup screen

- **Open State Time.** Value indicates how long each gate will remain open allowing grain to flow through.
- **Clearing Delay.** When the level of the grain is no longer high enough to trigger the Open Level and Close Level settings, the Clear Delay starts. When the Clear Delay timer expires the system can process an end-of-cycle sequence.
- **Settle time.** The amount of time that the grain is allowed to settle in the plot bucket after the preceding gate close before it starts weighing the grain.
- **Weight time.** The amount of time data is collected and averaged to determine the actual weight reading

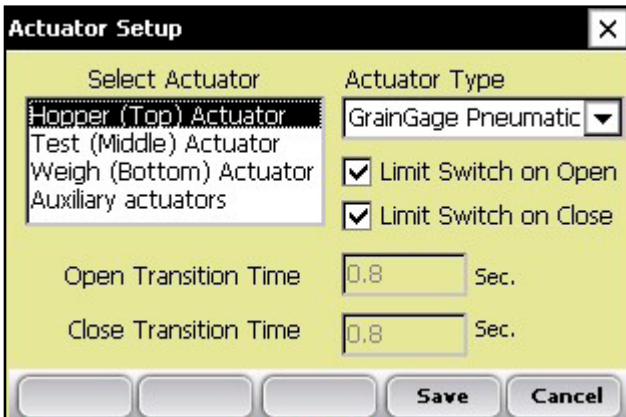
## Actuators

The Actuator Setup screen is used to select the appropriate type of actuator and transition times for your system. To access the screen, choose **Setup** (F3) on the main FRS screen then tap **Hardware Setup > Classic Graingage Setup > Actuators**.



**Figure 3-21: Double-tap Actuators from the Setup menu to access the Actuator Setup screen**

Once you see the Actuator Setup screen, select the appropriate actuator type from the drop-down menu for each actuator.



**Figure 3-22: Actuator Setup screen**

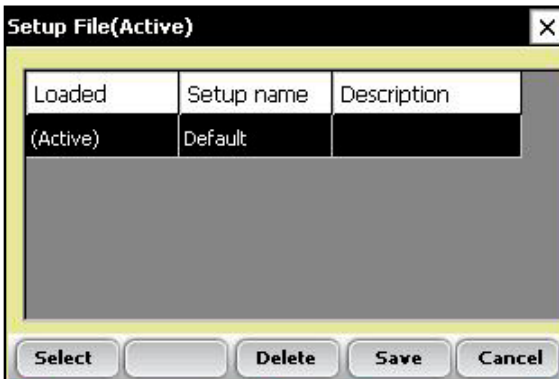
## Chapter 3

If limit switches are being used (limit switches are used by default and is recommended), check the boxes accordingly. If limit switches are not being used, enter the time in seconds needed for the stroke of the actuator to fully extend or retract. In the example above, the limit switch is enabled for the Hopper (top) on the closing transition only. On the opening transition, a time of 0.8 seconds controls the actuator.

### Setup File

The **Setup File** option on the Setup menu is a way to establish specific settings for a specific machine. This is helpful if you want to use your handheld with more than one combine. The steps below explain how to establish setup files for two combines.

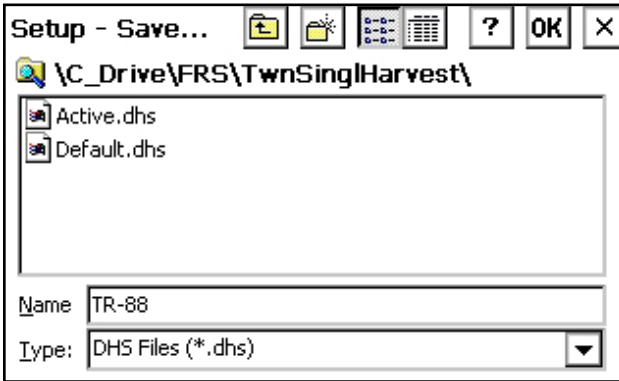
1. Set up and calibrate one combine.
2. Enter the Setup File screen by double-tapping **Setup File** in the Setup menu. A list of existing setup files appears.



*Figure 3-23: Setup files that appear by default*

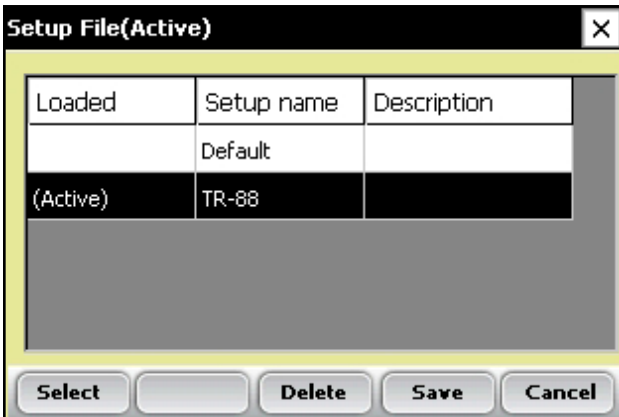
By default, the settings you created when you set up and calibrated the handheld were saved to the Default setup file.

3. To create a setup file for a second combine, tap **Save** (F4).



**Figure 3-24: Naming a new setup file**

4. Create a name for the second setup file.
5. Repeat steps 1–2. The new setup file appears.



**Figure 3-25: The new setup file appears**

## Chapter 3

6. As you can see in the first column, this second setup file is now the active file, which means that any setting and calibrations changes you make are automatically saved to that file. To make another setup file active, select it then tap **Select**.

To create setup files for additional machines, repeat the process.



CHAPTER 4  
**DIAGNOSTICS MENU**

Load Cell

Moisture

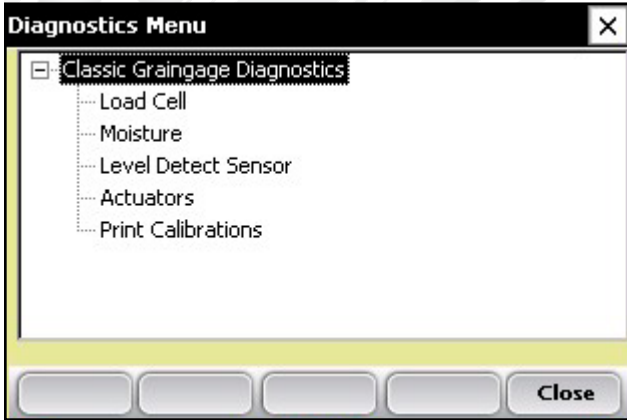
Level Detect Sensor

Actuators

Print Calibrations

# Diagnostics Menu

The Diagnostics menu is designed to help you troubleshoot and test your hardware. To access this option, select **Diag.** (F4) from the main FRS screen. Six submenu options appear on the Diagnostics Menu page, shown in the following image. Each option is described below.



*Figure 4-1: Diagnostics Menu screen*

## Load Cell

### Checking the calibration

You can check the calibration of the load cell using the options on the Diagnostics Menu screen. Before you do that, however, first check the accuracy of your calibrations by ensuring that—

- the combine is on level ground and out of the wind,
- the weigh bucket is empty, and
- the calibration weight is close to 5 lbs or 2.23 kg.

Follow these steps to check your load cell calibration:

1. From the Diagnostics Menu, double-tap **Load Cell**. The Diagnostics Load Cell screen appears, shown here.

Diagnostics Load Cell					
		Volts		lbs	
Cell A	4.438			1.80	
Cell B	3.681			0.61	
Cell C	4.992			2.77	
<b>Total</b>				<b>5.18</b>	
Slope and Motion <b>ON</b>					
Ref	4.00	Q	1.000	Total	0.00
MVOLT	0.004	Zero	3217704		
Tare				Close	

*Figure 4-2: Diagnostics Load Cell screen*

2. Make sure the weight values for Cell A, Cell B, Cell C and the total weight all equal close to zero. If not, tare the system by selecting **Tare** (F2).

Volts		lbs	
Cell A	2.777	0.00	
Cell B	3.112	-0.00	
Cell C	2.428	-0.01	
<b>Total</b>		<b>-0.01</b>	
<b>Slope and Motion ON</b>			
Ref	4.00	Q	1.000 Total 0.00
MVolt	0.004	Zero	3217704
<b>Tare</b>			<b>Close</b>

**Figure 4-3: Weight values for Cell A, Cell B, Cell C and Total change after a tare**

3. Place your known weight onto weigh pan.
4. The weight shown in the Total line should match your known weight. If the weight is incorrect, recalibrate the load cells by returning to the main FRS page and selecting **Setup > Hardware Setup > Classic Graingage Setup > Weight Calibration**.

In addition to showing information related to the load cells, the Diagnostics Load Cell screen shows the values

associated with the Slope and Motion Sensor. Information for this screen is described below.

Diagnostics Load Cell				
	<b>Volts</b>		<b>lbs</b>	
Cell A	2.777		0.00	
Cell B	3.112		-0.00	
Cell C	2.428		-0.01	
	<b>Total</b>		<b>-0.01</b>	
<b>Slope and Motion ON</b>				
<b>Ref</b>	<b>4.00</b>	<b>Q</b>	<b>1.000</b>	<b>Total 0.00</b>
MVolt	0.004	Zero	3217704	
<b>Tare</b>				<b>Close</b>

**Figure 4-4: Elements of the Diagnostics Load Cell screen**

***Volts (Voltage)***

The Volts reading displays the raw voltage reading from load cells A, B and C.

***Lbs or kg (weight)***

The Weight reading displays the calibrated weights of the load cells.

***Total***

This value reflects the total weight on all load cells plus any adjustment if the Slope and Motion sensor was turned on.

***Ref, Q, and Total***

These values are used for calculations. Note that the Q value should typically read 1.000. If it does not, we recommend that you disable then re-enable the Slope and Motion sensor from the Setup menu.

### *SM (Slope and Motion) status*

The SM status shows whether the Slope and Motion Sensor is turned **On** or **Off**.

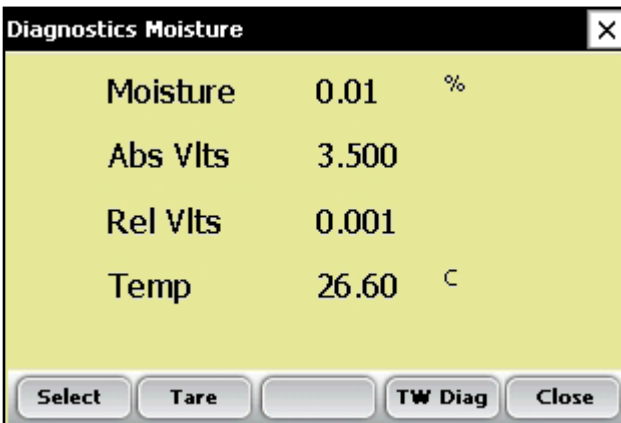
### *Tare (F2)*

Retares the load cells if the Total weight is not zero.

## **Moisture**

The Moisture option allows you to view readings associated with the EM Grain Moisture sensor.

To view the Diagnostics Moisture screen, select **Moisture** from the Diagnostics menu. The following information is displayed.



The screenshot shows a window titled "Diagnostics Moisture" with a close button (X) in the top right corner. The window has a light green background and displays the following data:

Moisture	0.01	%
Abs Vlts	3.500	
Rel Vlts	0.001	
Temp	26.60	°C

At the bottom of the window, there are five buttons: "Select", "Tare", an empty button, "TW Diag", and "Close".

*Figure 4-5: Diagnostics Moisture screen*

### *Moisture*

The percentage of moisture read by the moisture sensor.

### *Abs Vlts (Absolute Volts)*

The raw voltage reading from the moisture sensor.

### *Rel Vlts (Relative Volts)*

The tared-out voltage reading of the moisture sensor.

### *Temp (Temperature)*

The temperature read from the moisture sensor.

### *Tare (F2)*

To retare the moisture reading, select **Tare** (F2).

### *Select (F1)*

Tapping this soft key opens the moisture curve menu screen, allowing you to select a moisture curve to be used for checking calibration. Select the curve and then tap **Select** (F1) again to return to the previous screen.

## **LED Codes on the EM Grain Moisture Sensor**

Green, yellow, and red LED's (light emitting diode) are designed into the sensor for service and diagnostics purposes. These LED's can be viewed by looking at the right side of the white plastic housing of the sensor. The function of the LED's are described as follows.

**Green:** On solid when +12 VDC is applied to the sensor

**Yellow:** Blinks whenever a message is transmitted from the sensor such as when the application software is in the moisture diagnostics menu.

**Red:** Indicates sensor error conditions. With no error codes, the red alternates one second on, then one second off.

## Chapter 4

Any error codes are represented by pairs of 'rapid blinking', the number of blinks corresponding to the first and second digit of an error code from the list below:

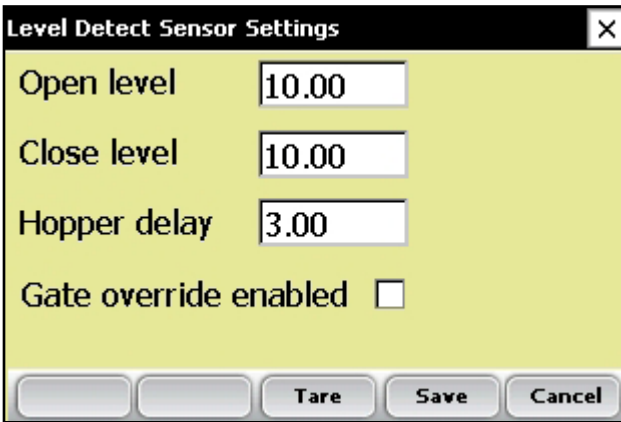
11. Watchdog reset has occurred
12. Timed Task Buffer overflow detected
13. Low memory alert ( $M < 50$  bytes)
21. Input buffer overrun
22. Checksum error detected
23. Unrecognized command received by sensor
24. RS-485 busy encountered
25. Sensor response message aborted
32. Frequency measurement zero error (no oscillation counts)
33. Frequency measurement range error (over 3 Mhz)
41. Blade voltage range error
42. Temperature sensor zero error (reading at or below  $-15$  C (5 F))
43. Temperature sensor range error (reading above  $+60$  C )
44. System supply voltage below +10.0 Volts
45. System voltage above +18.0 Volts
55. Invalid error code reported

When the sensor is operating normally, no error codes should show. There should just be a steady one second on, one second off blink of the red. Otherwise, general interpretation would be:

- 11, 12, 13, 55: Software system problems. Report to customer service and design engineering with description of circumstances.
- 21, 22, 23, 24, 25: Faulty sensor wires, or faulty SCCU. These could be caused by some fault within the EMGS, but it is not likely.
- 32, 33, 41: Likely cause would be a bad connection from the sensor to the ground plane around the blade, or from the sensor board to the blade.
- 42, 43: Assuming the temperature is in a normal ambient range from -10 C to +40 C, these codes would indicate a failed temperature sensor, or board solder connection.
- 44,45: These are more likely caused by a problem in the power supplied to the EMGS.

## Level Detect Sensor

The Diagnostics Level Detect Sensor screen shows readings from the level detect sensor, which is used to detect the level of grain in a bucket. To access this screen, select **Diag** (F4) from the main FRS screen, then select **Level Detect Sensor**. The following information is displayed.



*Figure 4-7: Actuator Setup screen*

### *Current*

The current readings from the level detect sensor.

### *Tare Value*

The zero reference frequency

### *Trip Point*

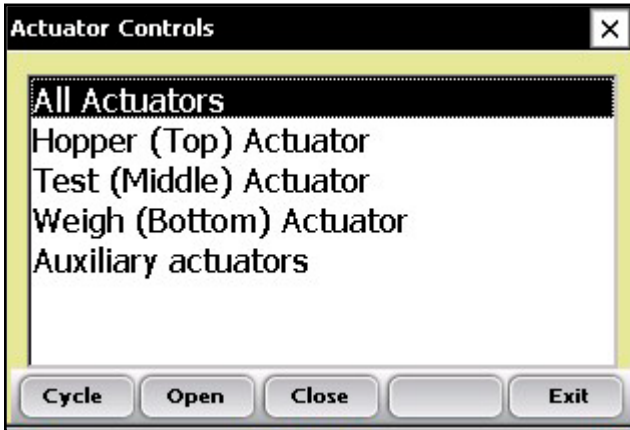
The minimum reading that the level detect must reach before cycling the system.

### *Tare (F2)*

Retares the level detect reference frequency.

## Actuators

This Actuator Controls screen allows you to open, close, or cycle any or all of the actuators. To access this screen, select Diag. (F4) from the main FRS screen, then select **Actuator**. The Actuator Controls screen appears.



*Figure 4-8: Actuator Controls screen*

Select the actuator you want to control, and then choose from one of the menu options: **Cycle** (F1), **Open** (F2), or **Close** (F3).

## Print Calibrations

The Print Calibrations menu allows you to print your calibration settings. To print, simply select one of the calibration options and tap **Print** (F1).

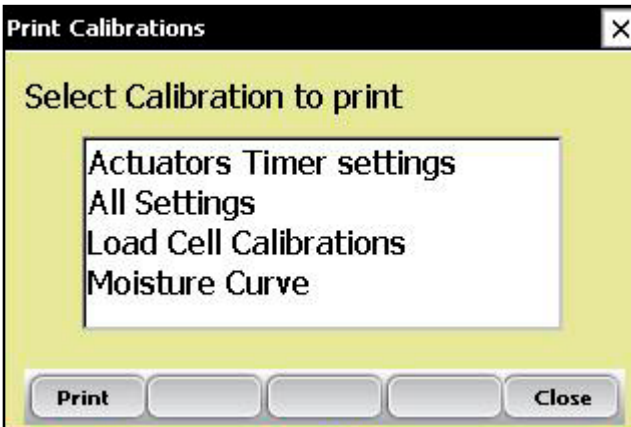


Figure 4-9: Print Calibrations screen



CHAPTER 5  
**CREATING TRAITS  
AND TEMPLATES  
FOR HARVEST**

Create harvest traits

Create a Harvest Template

# Creating Traits and Templates for Harvest

---

## Create harvest traits

Before you can collect harvest data, you first need to add or select harvest traits from the Master Traits List and then create a harvest trait template for these new traits. FRS includes sample harvest traits and templates. You can create your own traits or modify the traits that are included with FRS.

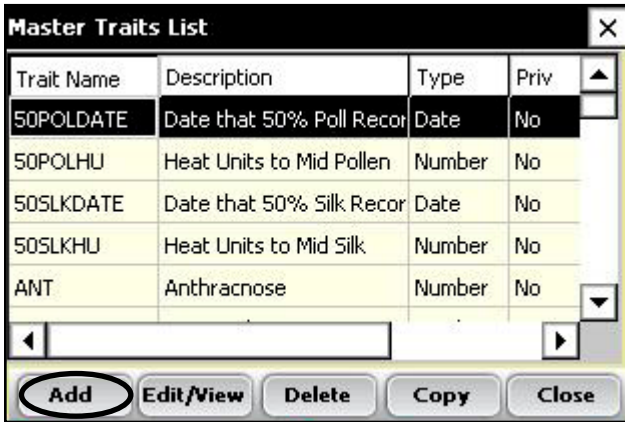
**Note:** It is especially important that traits that reflect data from the GrainGage, such as moisture and weight, are set up correctly in order for the software to register data from the hardware. If these traits are not set up correctly, data will not be recorded from these devices.

## Adding a trait to the Master Traits List

Follow these steps to add a trait to the Master Trait List:

1. Open the Master Traits List screen by choosing **Setup** (F3) and double-tapping **Traits Management**.

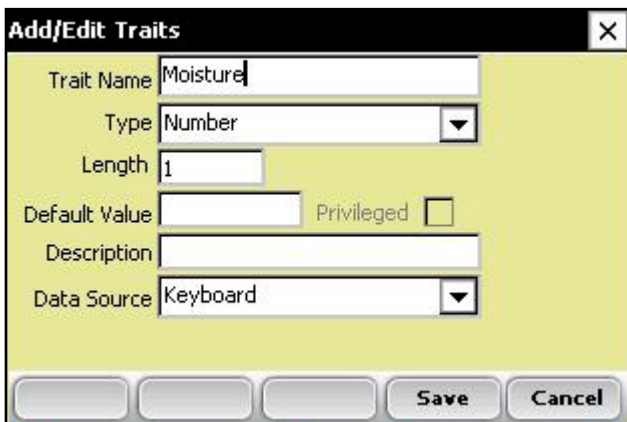
2. Select **Add** (F1) from the Master Traits List screen.



**Figure 5-1: Create a new trait list by tapping Add on the Master Traits List screen**

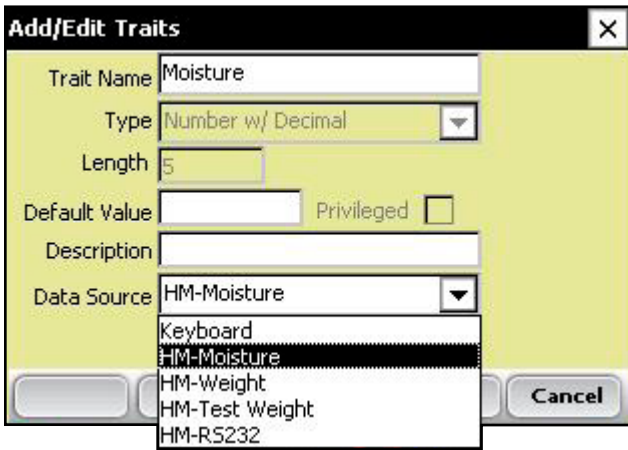
3. Type in a name you would like to use for harvest traits. Common names used are **Moisture** for grain moisture, **Weight** for plot weight, and **Test** for the grain test weight.

**Important:** If you are collecting harvest data, you need to create a trait for weight. Creating traits for moisture and test weight is optional.



**Figure 5-2: Entering a Trait Name for a new trait**

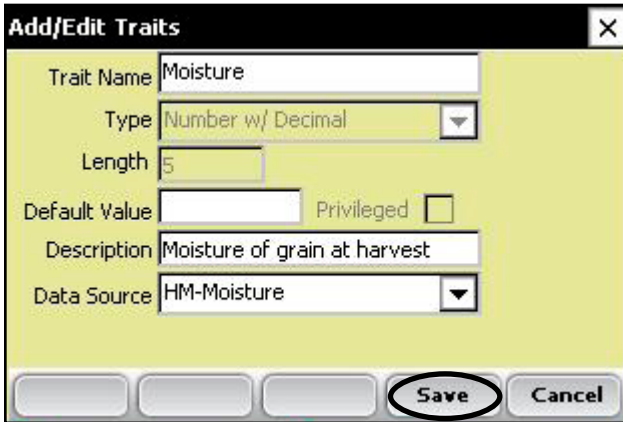
4. Skip down to Data Source on the screen and select **HM-Moisture**, **HM-Weight** or **HM-Test Weight** from the drop-down box, depending on which trait you are creating. In order for the trait data to be recorded from the GrainGage, the correct data source must be selected. The Type and Length information is automatic.



**Figure 5-3: Selecting a Data Source**

5. **(Optional)** Add a trait description to clarify the type of trait that has been created. Example: **Moisture of grain at harvest**.

6. Save the new trait by pressing Save (F4).



*Figure 5-4: Saving a new harvest trait*

## **Create a Harvest Template**

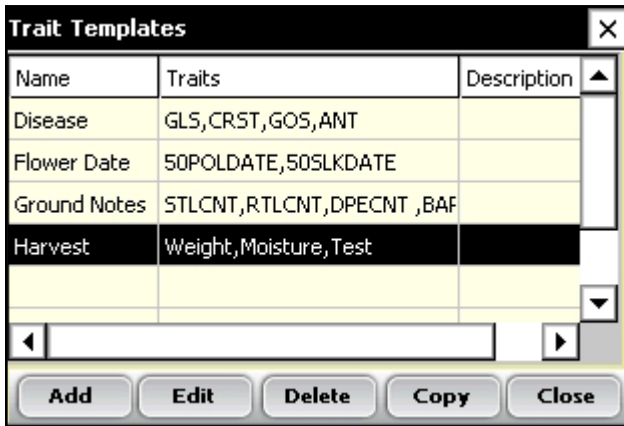
After you have added harvest traits to the Master Trait List, create a trait template that contains these new traits.

To create a trait template, follow these steps:

1. From the Setup Menu, expand the Traits Management option and double-tap *Trait Templates*.

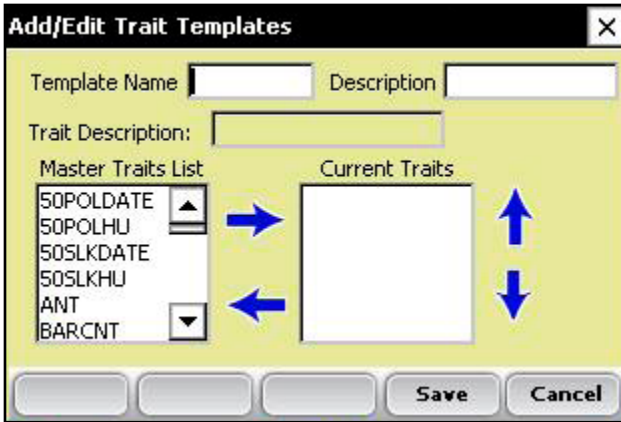


*Figure 5-5: Double-tap Trait Templates to open the Trait Templates screen*



*Figure 5-6: Trait Templates screen*

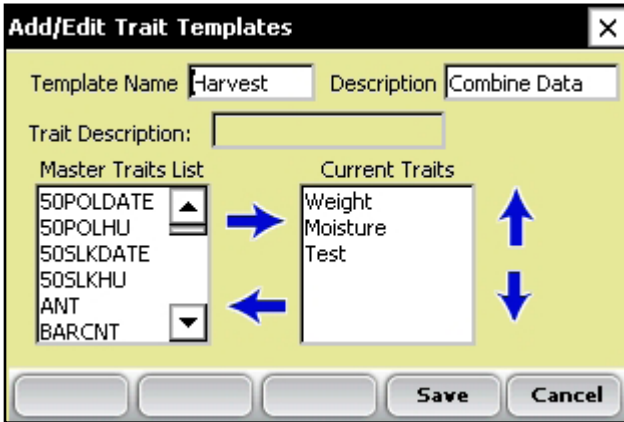
2. Select **Add** (F1) to create a blank template. The Add/Edit Trait Templates screen appears.



**Figure 5-7: Add/Edit Trait Templates screen**

3. Type a Template Name and Description to help identify the template. (**Harvest or Harvest Data are suggested template names.**)
4. Scroll down through the Master Traits List to find the Weight, Moisture and Test Weight traits you created. Highlight one of the traits, then tap on the Right Arrow in the middle of the screen to move it to the Current Traits window. In the example below, Weight, Moisture, and Test traits have been added as Current Traits.

**Note:** You can change the trait order by tapping on the up or down arrows on the screen.



**Figure 5-8:** *New template called Harvest*

5. Press **Save** (F4) to save the new template.



CHAPTER 6  
**HARVEST DATA  
COLLECTION**

Preparing to collect harvest data

Harvesting and collecting data

Viewing your harvest data using the List Screen

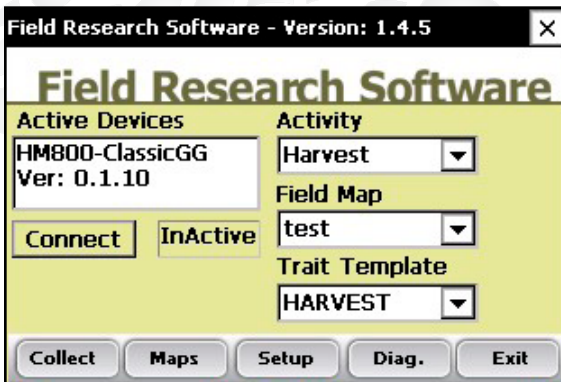
# Harvest Data Collection

After you have calibrated the Classic GrainGage, created harvest traits, and created a new harvest trait template, you are now ready to collect data. This chapter explains how to prepare for, collect, and view harvest data using FRS. For additional information, refer to the *FRS Field Reference Guide (Note Taking)*.

## Preparing to collect harvest data

Follow these steps to prepare FRS to collect harvest data:

1. On the FRS Main Screen, make sure the Active Devices box shows Classic in the Setup menu under **System > Manage Devices**.

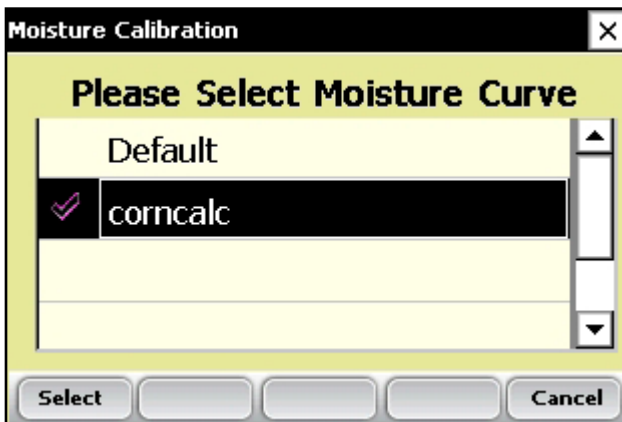


*Figure 6-1: The HM800-Classic appears in the Active Devices box*

2. Select the appropriate activity from the Activity drop-down menu on the FRS Main Screen. For example, if you plan to use FRS for harvesting, select the **Harvest** Activity. For standard plot lengths, set the activity to Harvest-Plot.
3. On this same screen, select the correct field map name from the pull down menu.

**Note:** If you need a new field map for harvest, create one before proceeding to the next step. Refer to the FRS Note Taking Field Reference Guide (Note Taking) manual for instructions on creating a new field map.

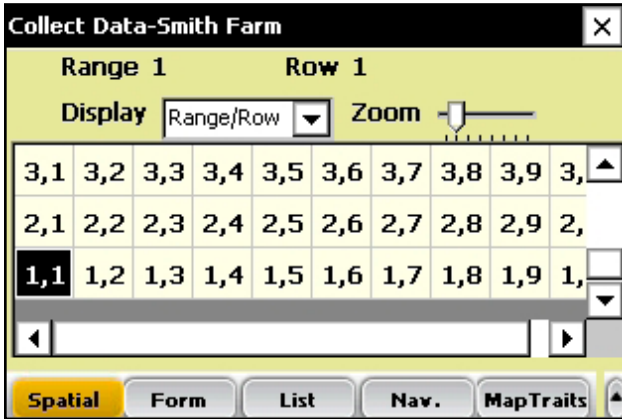
4. Select the trait template you want to use from the Trait Template drop-down box. Options include the harvest traits you created such as Weight, Moisture or Test Weight.
5. Select **Collect** (F1) to enter data collection mode. The Moisture Calibration screen appears.



**Figure 6-2: Moisture Calibration screen**

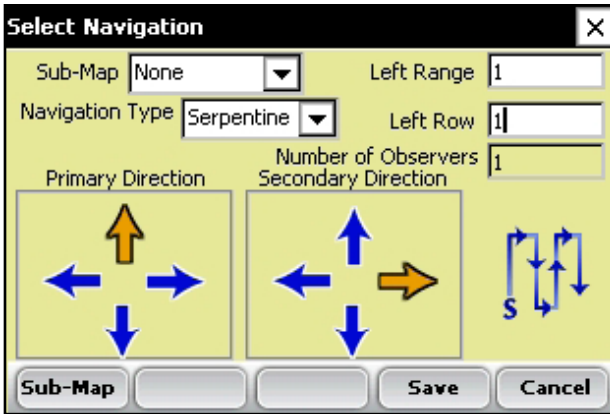
## Chapter 6

6. Select a moisture curve from the list, then tap **Select** (F1). Wait while harvest set ups are loaded.
7. The Collect Data Spatial screen appears, shown below.



**Figure 6-3: Row 1, Range 5 is selected in the Collect Data Spatial screen**

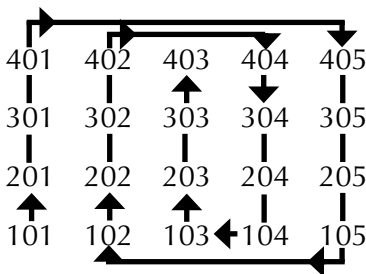
8. Choose the starting plot location by tapping on the cell. In Figure 6-3, the selected cell is Row 1, Range 1. After you tap on the starting plot cell, the screen shows the combine's current location in the field and which plots have already been harvested.
9. Establish your navigation type by selecting **Nav.** (F4). The Select Navigation screen appears.



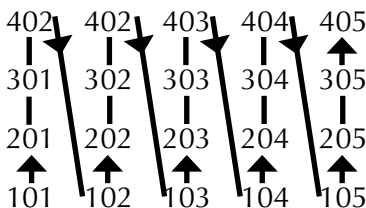
**Figure 6-4:** Select Navigation screen for a single plot combine

### Navigation Type

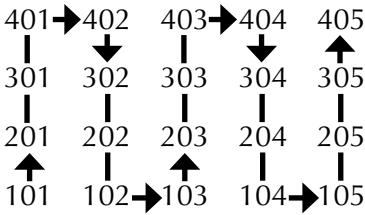
The navigation type is the harvest route through a field. Select a navigation type from the pull down menu. Examples of Navigation patterns for harvest are shown below.



**Figure 6-5:** Circular navigation type



**Figure 6-6:** Sequential navigation type



**Figure 6-7: Serpentine navigation type**

Tap **Save** (F4) to save your settings.

### Harvest Sequence

The Classic GrainGage is an all inclusive system with a hopper chamber, test chamber and plot chamber. These chambers are stacked on top of one another inside of the GrainGage. A slide gate or door separates the chambers. Unlike bucket systems that measure all of the grain in a plot at once, the GG processes the grain in batches or incrementally.

#### Plot Harvest

1. Press Enter to begin the Tare sequence.
2. The user drives the combine through the 20 ft plot. Grain is shelled in the combine and routed into the holding hopper. At the end of the plot the user stops the combine allowing it to clean out. The Classic GrainGage begins processing the grain as it reaches the holding hopper.
3. When grain level inside of the hopper reaches a point high enough to trigger the Open Level, the Classic GrainGage begins to cycle.

4. The Hopper door opens Grain drops into the Test chamber filling it up until it reaches a point on the level detect to trigger the Close Level which causes the hopper door to close.
5. With the Hopper door closed, the Moisture readings are taken by the EM Sensor. The Test Chamber should be full in order to get accurate Moisture and Test Weight readings.
6. After Moisture has been recorded, the test chamber door opens dropping the grain into the Plot chamber. The test chamber closes initiating the weight cycle.
7. The grain weight is measured in the Weigh or Plot chamber, after this reading has been taken the Plot door opens dumping out the grain out of the GrainGage.
8. At this point the weight, average moisture is displayed on the screen of the FRS software along with cycle count.
9. This process continues as long as grain is high enough in the Hopper Chamber to trigger the Level Detect. The system does not have to wait for the Plot finish before the

Hopper door opens to dump the next amount of grain in the Test Chamber. As soon as the Test chamber door has closed indicating its contents have been emptied the Hopper door can open.

Range 1	Row 1
Weight	0.00
Moisture	0.00
TestWght	0.00

C:0

Spatial Form List Nav. MapTraits

Figure 6-8: Classic GrainGage cycling

10. If the grain fails to trigger the Level Detect, the system stops cycling on its own. The user will then press the Enter key to initiate two complete cycles of the system to clean out the remaining grain. No moisture or test weight is recorded during these last two cycles, only plot weight.

**Note:** If the user presses the Enter key at any time while the GrainGage is processing grain, the Enter key is registered but the GrainGage continues to cycle. The Enter key is processed as soon as the grain level no longer triggers the level detect.

11. After the second clean out cycle, the total Weight, Average Moisture and Average Test Weight for the entire plot is stored into the FRS database and sent to the printer. Backup data is also stored in log files and data are displayed on the screen. The last chamber weight is also shown on the display at bottom of the screen.

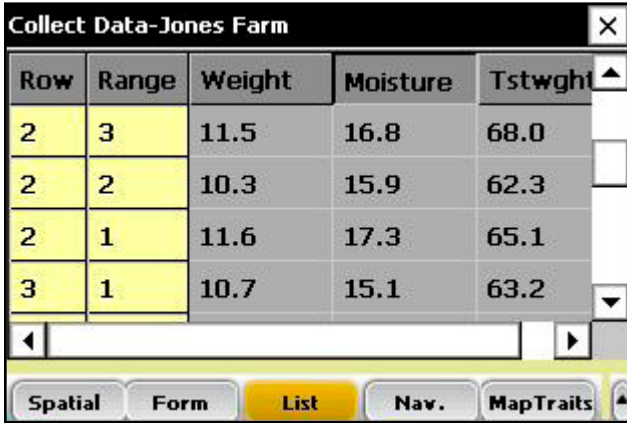
Collect Data-Jones Farm	
Range 3	Row 1
<b>Weight</b>	<b>2.33</b>
<b>Moisture</b>	<b>9.34</b>
<b>TestWght</b>	<b>59.04</b>
<b>C:1</b>	
<span>Spatial</span> <span><b>Form</b></span> <span>List</span> <span>Nav.</span> <span>MapTraits</span>	

*Figure 6-9: Total plot info*

12. The user can drive into the next plot as soon as the Enter key is pressed or after data is sent to the printer which ever is preferred by the driver.

## Viewing your harvest data using the List Screen

By selecting **List** (F3), you can view your harvest data. Note: You CANNOT collect harvest data while you are in this screen. To harvest, you must be in the Form screen. See the section above called **Plot Harvest Sequence** for details.



Row	Range	Weight	Moisture	Tstwght
2	3	11.5	16.8	68.0
2	2	10.3	15.9	62.3
2	1	11.6	17.3	65.1
3	1	10.7	15.1	63.2

*Figure 6-10: List screen showing moisture, test weight, and weight values for each plot*

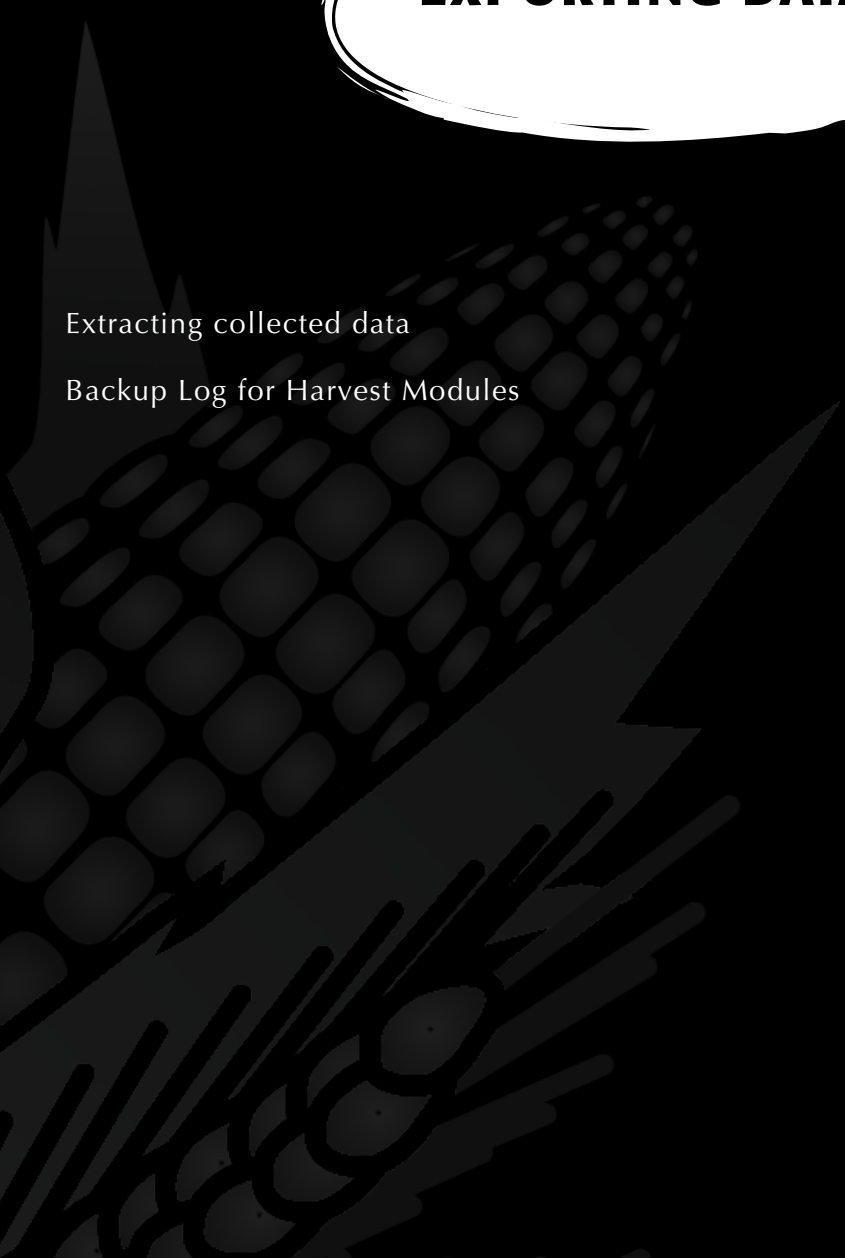


## CHAPTER 7

# **EXPORTING DATA**

Extracting collected data

Backup Log for Harvest Modules



# Exporting Data

## Extracting collected data

The first step in exporting data is to extract collected data from the FRS database to the Export folder on the handheld. To extract data, follow these steps:

1. Tap **Setup** on the main FRS screen to enter the Setup screen.

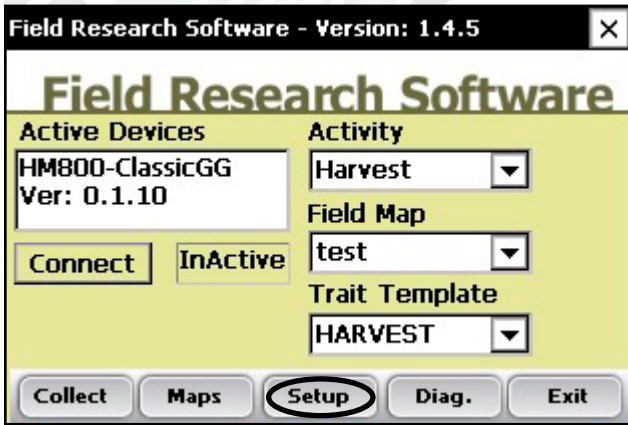
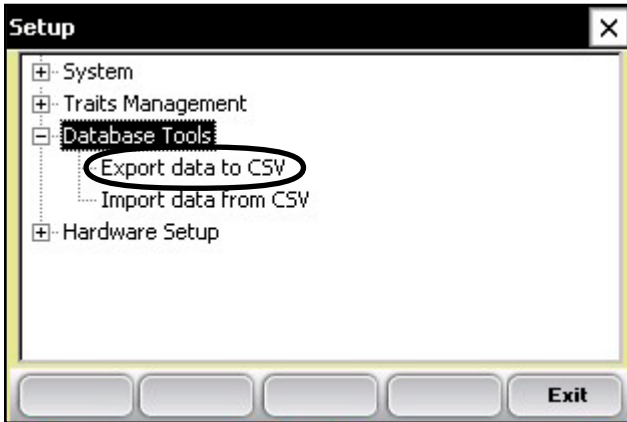


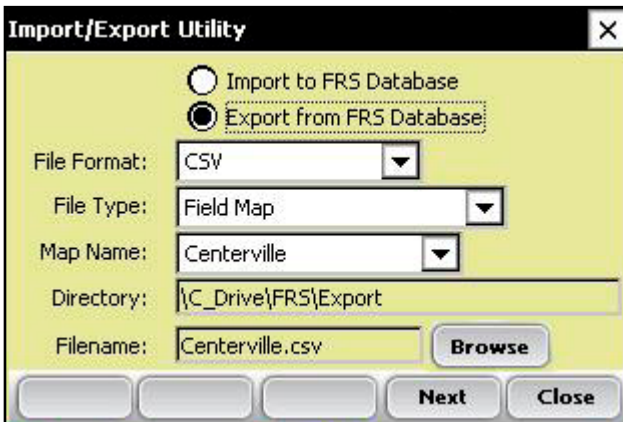
Figure 7-1: Select Setup from the main FRS screen

2. Choose **Database Tools** > **Export data** to CSV from the Setup menu.



**Figure 7-2: Choose Export data to CSV from the Setup menu**

3. The Import/Export Utility screen appears. Select **Export from FRS Database**.



**Figure 7-3: Import/Export Utility screen**

## Chapter 7

4. Fill in the information on the Import/Export Utility screen. For more information about the elements on the screen, see the **FRS Note Taking Field Reference Guide**. To find the map file you want to export, choose **Browse**.
5. Tap **Next** (F4).

If you extracted a field map, the Export Map Data screen appears, showing the target path where the file will be saved. Select the option to **Include previously exported data** if you plan to export all data associated with this map again at a later time. If you only want to export new data associated with the map in the future, leave the option unselected.

After data has been exported to the handheld, it can be copied to the desktop using ActiveSync.

Refer to the **FRS Note Taking Field Reference Guide** for more details on exporting data.

### Backup Log for Harvest Modules

FRS software creates a backup log of data that has been collected from the harvester. This log file contains the date, time, range, row, plot weight, moisture, and test weight for each plot harvested. It also contains values used for moisture and test weight calibration, and Slope and Motion compensation, or Q value. The backup log file is found on the Allegro, see Figure 7-4.

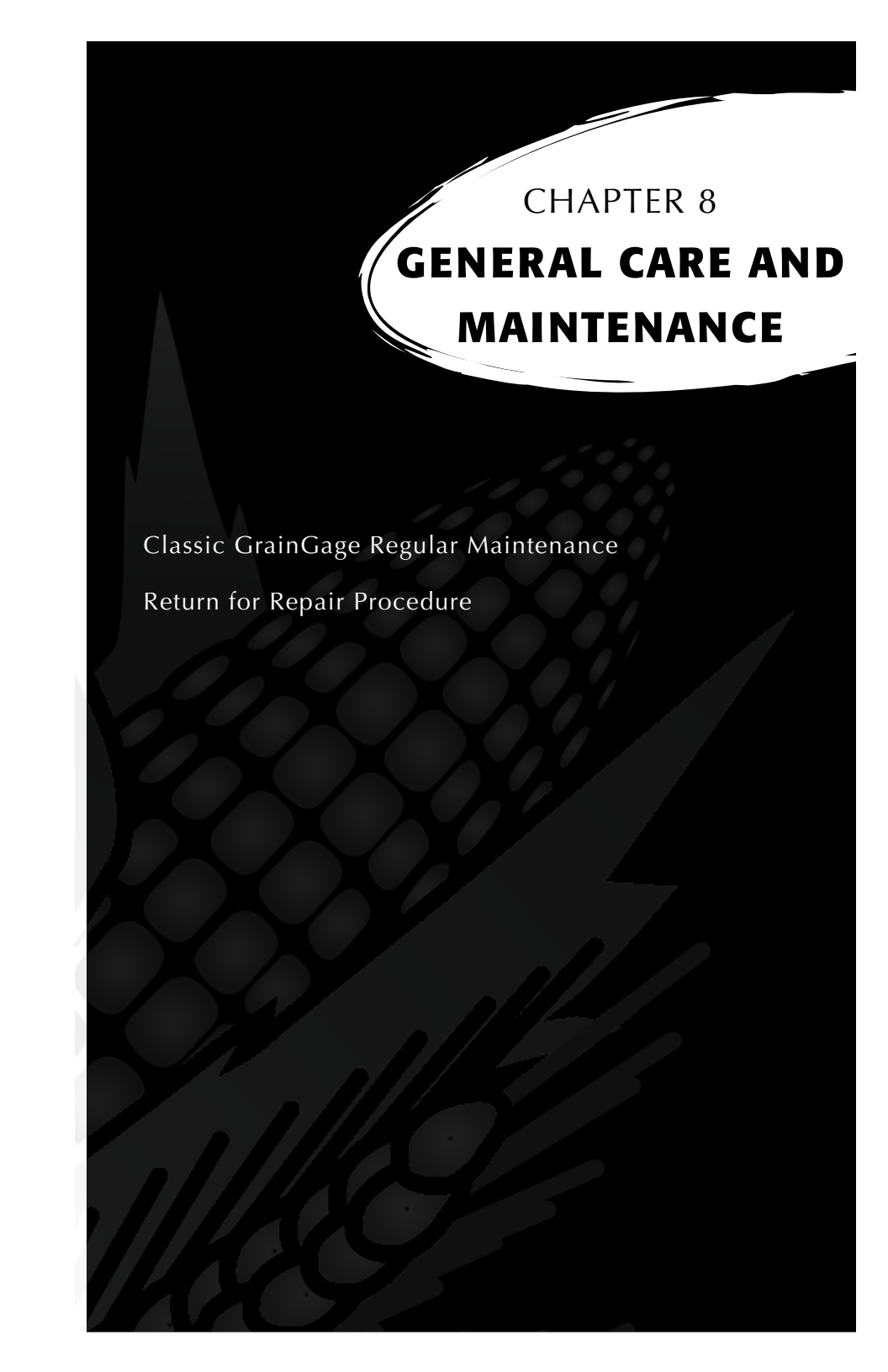
Path: C\_Drive\FRS\HarvestBackup

Each backup log references the same name as the field map used for harvest. For example, if the name of the field being harvested is Smith Farm, the name of the backup log would be Smith Farm\_Classic.csv.

	A	B	C	D	E	F	G	H	I	J	K
1	Date	Time	Range (ID1)	Row (ID2)	ID3	Cycle#	Weight	Moisture	Test Weight	Slope Motion Q	Uncomp Weight
2	18/02/2008	14:50:54	1	1		0	0	0	0	0.000	2.441
3	18/02/2008	14:51:34	1	1		1	2.312	9.275	58.499	1.000	0
4	18/02/2008	14:51:40	1	1		2	2.289	9.111	57.907	1.000	2.312
5	18/02/2008	14:51:45	1	1		3	0.936	5.749	23.686	1.000	2.289
6	18/02/2008	14:52:08	1	1		4	-0.003	0	-0.063	1.000	0.936
7	18/02/2008	14:52:14	1	1		5	-0.003	1.003	-0.086	1.000	-0.003
8	18/02/2008	14:52:16	1	1		T	5.532	8.045	46.697		
9	18/02/2008	14:53:29	2	1		1	2.307	9.148	58.358	1.000	0
10	18/02/2008	14:53:35	2	1		2	2.303	9.271	58.262	1.000	2.307
11	18/02/2008	14:53:40	2	1		3	0.939	5.829	23.768	1.000	2.303
12	18/02/2008	14:54:06	2	1		4	2.303	9.312	58.264	1.000	0.939
13	18/02/2008	14:54:12	2	1		5	0.803	5.165	20.318	1.000	2.303
14	18/02/2008	14:54:31	2	1		6	0.002	0	0.04	1.000	0.803
15	18/02/2008	14:54:36	2	1		7	0.002	0	0.058	1.000	0.002
16	18/02/2008	14:54:39	2	1		T	8.659	7.745	43.794		
17	18/02/2008	14:55:26	3	1		1	2.334	9.344	59.036	1.001	0.002
18	18/02/2008	14:55:31	3	1		2	2.286	9.287	57.839	1.000	2.334
19	18/02/2008	14:55:37	3	1		3	0.926	5.834	23.427	1.000	2.286
20	18/02/2008	14:57:54	3	1		4	0.000	0.000	0.000	1.000	0.000

**Figure 7-4: Example of backup log file.**

# Chapter 7



CHAPTER 8  
**GENERAL CARE AND  
MAINTENANCE**

Classic GrainGage Regular Maintenance  
Return for Repair Procedure

# General Care and Maintenance

---

## Classic GrainGage Regular Maintenance

HarvestMaster products are built to be robust and will withstand most weather conditions. All of our products are environmentally sealed and built for outdoor use. However, there are some steps you can take that will increase the operational life of the system. The following tips will help you to have fewer problems and will ensure the maximum life out of your system.

## Recommended Pre-Harvest Maintenance

We recommend starting your pre-harvest checklist at least two weeks before you plan to be in the field. In addition, we also recommend that when you are checking calibrations that you run several samples of grain with known weights and moistures through the system to assure accurate moisture and weight calibrations.

### *All Systems*

- Clean the combine battery terminals to assure a good power and good connection.
- Inspect all cables for mice damage.
- Make sure all cables are secure ("click" lock into place) and are not touching or interfering with the weigh bucket assembly.

- If equipped with a pneumatic air system, check the filters and lubricator for contamination. Replace as necessary. Close the petcock valve on the air tank and charge the system up to 120 PSI. Check for air leaks. Operating pressure should be regulated to 50PSI.
- Check the limit switches for proper function (adjust if needed).
- Check the actuator operation for each door assembly for normal operation. Slow moving actuators are usually an indication of a plugged metal porous vent on exhaust port of solenoid. Replace or clean as needed.
- Ensure the weigh bucket or pan moves freely. Verify air hoses and cables are not interfering with the weigh pan.
- Check the actuators and slides for proper function and adjustment. If needed, lubricate the slides with DRY graphite to minimize gum or chaff buildup. **CAUTION:** Do not use wet lubricants on the gate assemblies.
- Run “DIAGNOSTIC” menu checks on the load cells, moisture sensor, and level detect sensor as outlined in the Diagnostics section of this reference guide.
- Check weight and moisture calibrations.

### ***Recommended Maintenance during Harvest (each morning)***

- If your GrainGage is equipped with pneumatics, drain the water from the air tank using the petcock relief valve.

## Chapter 8

- Drain water from the lubricator/water separator bowl by pulling down on the drain plug.
- Blow chaff and broken kernels out of and from around the weight bucket or pan.
- Check the load cell calibration using a known weight.
- Check the compressor air filters.

### *Recommended Post-Harvest Maintenance*

- Print setups and moisture curves. Save and file this information in an area where it can be found in future years if needed.
- With about 120 PSI forced air, blow all chaff and broken kernels out of and from around the weigh bucket or pan. With the Classic GrainGage, be sure to get around the back load cell. Blow upward (from the bottom of the GrainGage) on each overload protection pin to ensure all the debris is out of the channels and away from the protection pins.
- Avoid using water to clean in and around the weigh systems. If you use a sprayer washer to clean the combine, be sure to keep the water away from all sensors and cabling.
- Disconnect the air hose from the GrainGage and let the air run (free-flow) for at least 5 minutes.
- Drain the air tank.
- Drain the pneumatic filter bowls and blow them dry with forced air.

- If the system has pneumatic actuators (e.g. GrainGages), retract all the cylinder rams into the housing.
- If mice have been a problem in the past, place mouse poison or traps in areas where mice might appear. Moth balls tend to help as well.
- If your Harvest Data System console is mounted outside of the cab (e.g. exposed to the elements), we recommend removing or covering the control box. It is best to store your system in a warm and dry environment.
- If the combine is not protected from the weather, cover any exposed cable ends (connectors) with plastic bags and secure tightly with twist-ties or rubber bands.

## **Installation and Maintenance Tips**

We suggest the following tips when installing and/or maintaining the Harvest Data System:

### *When using pneumatics:*

- Install a 3 to 5 gallon reservoir air-tank. This tank must have a petcock type drain valve or an electronically controlled drain valve to allow any water that accumulates inside the tank to be drained.
- Install the Bosch Combo filter/regulator as close to the High Capacity System as possible
- If areas of high humidity or when using a lubricated compressor it is recommended to install a Keaser Model KOR-20.

## Chapter 8

- Replace the Keaser filter every 100,000 plots or when the indicator is mostly RED. Use the “USOR-20” replacement filter element (sourced by Juniper systems).
- Clean filter bowls using kerosene or cleaning solvent. Replace the oil in the lubricator if contaminants collect in the bottom of the lubricator bowl or yearly. Contaminates from dirty oil may collect at the siphon tube filter, requiring the filter to be washed in kerosene and blown off with an air blow gun.

**CAUTION:** Certain compressor oils, chemicals, household cleaners, solvents, paints, and fumes may damage the plastic bowl. Be sure that you use cleaning chemicals that are safe for polycarbonate material.

- Adjust the oil delivery rate to one drop for every 15 to 20 cycles of a gate. The operation of the oil delivery rate may drop after an extended period of use. If this happens, clean the lubricator and all its air and oil distribution tubes with kerosene. We recommend replacing the lubricator every 5-6 years or if the color becomes white or cloudy.
- Set the drip rate on the lubricator as explained later in this section of User’s Guide.
- Use #10 (90 SSU) or lighter oil in your lubricator. We recommend using non-detergent, semi-synthetic or non-synthetic air-tool oil (replace yearly). Do not over fill the lubricator bowl.
- Use special anti-freeze lubricant if you are using the system in temperatures below freezing. This oil is a

special blend that can be purchased from Juniper Systems or most retail stores. The anti-freeze oil is not an additive and must not be mixed with other oils.

## **Operating Specifications**

The following operation specifications show the maximum pressure and temperature ratings for the filter bowl:

<b><i>Bowl Type</i></b>	<b><i>PSIG</i></b>	<b><i>Temperature</i></b>
Transparent Plastic	150 (10.3 bar)	125° F (52° C)
Metal	200 (14 bar)	175° F (79° C)

## **Air Regulator**

The regulator should be adjusted between 50 and 85 PSI. Colder temperatures may require higher pressures.

To adjust the pressure, complete the following steps:

1. Unlock the regulator by pulling down on the adjusting valve.
2. Turn the regulator clockwise to increase the pressure and counter clockwise to decrease the pressure.

## **Lubricator**

### ***Changing the Oil***

To change the oil, complete the following steps:

1. Release the air pressure from the air lines (through the HM-1020 Pneumatic Conditioning Center).
2. Remove the four mounting screws that hold the plastic bowl securely to the metal housing.

## Chapter 8

3. Gently pull down on the bowl while gradually tipping the bowl back and forth until it is removed.

**Note:** Be careful not to drop the plastic bowl from the metal bowl guard when emptying the oil.

4. Inspect the plastic bowl for deterioration or cracks. Replace as necessary.
5. Clean with a dry or water dampened cloth.
6. Refill the bowl to the level as indicated on the metal bowl guard. Do not overfill the lubricator. This causes it to malfunction and results in not providing the proper lubrication to the cylinders.

**CAUTION:** Install the metal bowl guard be installed to minimize the danger of flying fragments. Be sure the lubricator has a metal bowl guard before pressurizing the system.

### *Adjusting the Lubricator*

Your Bosch combination filter/ lubricator assembly is adjusted at the factory. If you are getting too much oil, you can adjust the assembly. To adjust the lubricator, follow these steps:

Adjustment set screw and oil viewing dome



**Figure 8-1:** Filter/lubricator assembly and set screw

For a simple adjustment, turn the oil flow adjustment screw clockwise until it stops. Turn the screw counterclockwise ½ turn to finish adjustment. If you wish to adjust the oil using a more thorough method, follow these steps:

1. The air system must be pressurized to operating pressure (approximately 50- 80 PSI).
2. Turn on the electronics of the Harvest Data system. On the handheld, go to the main FRS screen.
3. On the system, switch the Auto/Manual switch to Manual mode so you can cycle the system manually.
4. While watching the dropper in the oil viewing dome on top of the lubricator, cycle one of the gates 15 times using the Open and Close switches. Complete one cycle every 1-2 seconds.

**Note:** The gates can be cycled while standing by the GrainGage by pressing the red button on the top of the control solenoid (mounted to the right inside wall of the GrainGage). If the lubricator is not mounted close enough to the GrainGage to cycle the door and watch the site dome, find an assistant to set the oil delivery drop rate.

5. Using a short handled flat-head screwdriver, adjust the set screw in the lubricator so that a drop of oil falls inside the oil viewing dome every 15-20 cycles (cycle one door at a rate of one complete cycle ever 1-2 seconds).

### Replacing the Keaser Filter USOR-20

1. Release the air pressure from the air lines by either opening the relief valve on the GrainGage or opening the drain valve on the air tank.
2. Turn the filter bowl housing  $\frac{1}{4}$  turn counter clock-wise and gently pull down on the bowl while gradually tipping the bowl back and forth until it is removed.
3. Remove the RED filter by turning it counter clock-wise (as if removing a right handed screw).
4. Install new filter and tighten finger tight.
5. Reinstall filter bowls housing in reverse order as removed.

### Cylinder Removal and Installation

The cylinders on the Classic GrainGage can become worn from constant use and eventually wear out. As the cylinder wears out it leaks air, or responds slowly to the open and close command front console. When this starts happening, its time to remove your old cylinders and install new ones.

### Load Cell Replacement Procedures

**CAUTION:** The load cells in this system are extremely delicate. DO NOT allow your arms or tools to press upon the weigh pan or individual load cells at any time.

## **Tools Needed**

We recommend you have the following tools on hand to aid in replacement of the load cells:

- Allen wrenches (5/32" and 3/16")
- Socket set (3/8" drive with 7/16" socket and short extension)
- 7/16" end wrench (preferable 2" long)
- 0.020 feeler gage or load cell adjusting shim.
- Loc-Tite 242 Thread Locker
- Flat head screwdriver (4.0 x 60 mm)
- #3 Phillips screwdriver

## **Procedures**

1. Disconnect the air supply to the GrainGage by turning the air control valve to the off position.
2. Position the Field Computer so that you can see the display while working on the GrainGage.
3. Position the shipping stops (PVC block) under the weigh pan so the weight is OFF the load cells.
4. Enter the Harvest Data program and at the Main Menu select "Diagnostics" and then "Load Cells." Your display will show 3 voltages for the 400 system and 4 for the 800 system. The 800 will be labeled A, B, C, and Total:

## Chapter 8

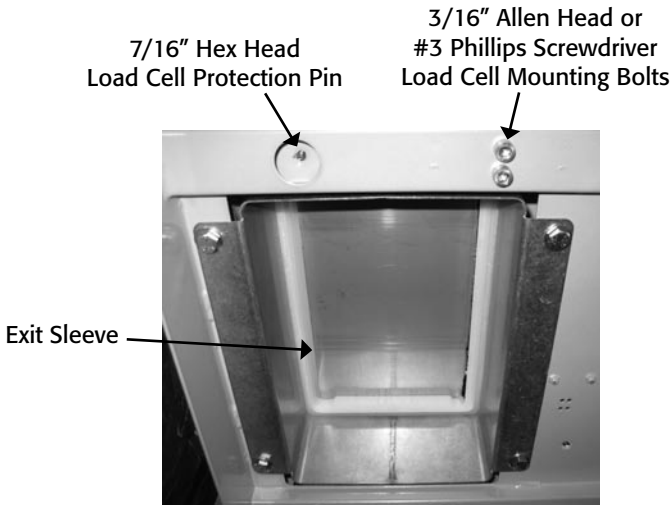
Cell A This is the combination of the two left hand load cells. (LdA1=front and LdA2=back)

Cell B This is the total of the right load cell.

Total This is the total of all three load cells.

5. Take note of the “Cell A,” “Cell B,” and “Total” voltages. This is the zero offset for each load cell.

**Note:** During the following procedures watch the total voltage column to make sure that it does not exceed a specification of + or – 1.5mV. Ideally, this reading should stay as close to 0.00 mV as possible.



**Figure 8-2: GrainGage exit sleeve (bottom view)**

This procedure ensures that you are not inadvertently exacting excessive upward or downward pressure on the load cells. When working on the left-hand load cells (LdA1 and LdA2), disconnect the load cell you are not

working on. This allows you to see the voltage of each individual load cell.

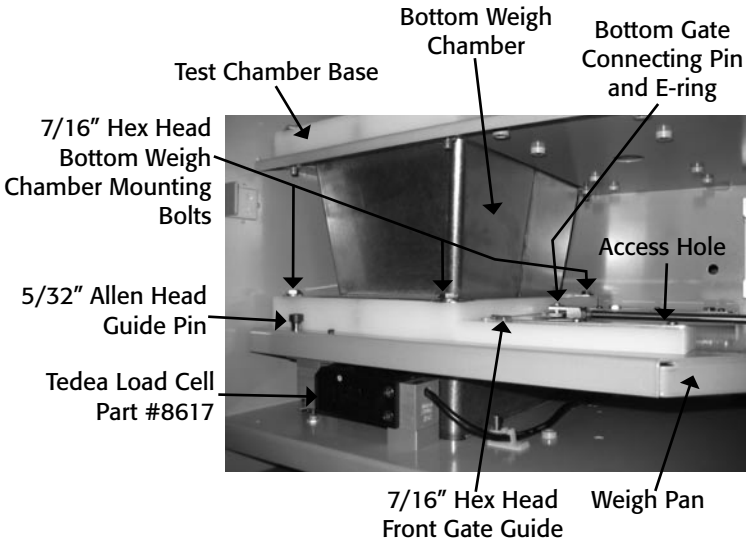
6. Using the 7/16" end wrench or 7/16" socket and extension, remove the four 1/4" exit sleeve bolts from the bottom of the GrainGage and remove the exit sleeve (refer to Figure #1 GrainGage Exit Sleeve).
7. Slide the bottom gate halfway open so the gate connecting pin on the actuator aligns with the hole in the weigh pan (refer to Figure #2 GrainGage Weigh Pan Assembly).
8. Remove the E-rings from the bottom gate connecting pin and push the pin out. Close the bottom gate.

**Note:** The E-ring can be removed by using a screwdriver to pry the edge of the E-ring away from the pin until it snaps free.

9. Disconnect the black air hoses from the actuator cylinder by pressing the orange into the hose and pulling the hose out (take note of their proper positions).
10. Using the 7/16" socket and ratchet (without extension), remove the two 1/4" bolts on the gate guide closest to you (front gate guide) and then remove the three 1/4" mounting bolts from the bottom weigh chamber (two in front and one in back). Set the gate guide aside for future reference (Refer to Figure #2).
11. Using a 5/32" Allen wrench, remove the guide pin located at the left front corner of the weigh pan, being careful not to exert any pressure on the load cell.
12. Using the 5/32" Allen wrench, remove the guide pin located on the right side of the weigh pan (in front of the actuator).

13. Make sure the shipping stops are disabled by following the procedures outlined below:
  - a. Remove the three shipping stop Hex bolts.
  - b. Remove the three PVC spacers between the weigh pan assembly and the bottom of the GrainGage.

**Note:** Keep these parts in a convenient place in case you need to ship the GrainGage by mail. The shipping stops are not needed when the GrainGage is mounted to the combine.



**Figure 8-3: GrainGage weigh pan assembly**

14. Lift the lower chamber up firmly against the top of the test chamber base and carefully slide the white weigh chamber base out of the GrainGage. The lower stainless steel chamber has a 1/8" lip on the bottom skirt. When removing, make sure to lift the white base over the protruding rubber nipple on the weigh pan.

**CAUTION:** Be careful not to exert too much downward pressure on the load cell when removing the weigh chamber base.

**Note:** If removing the base is too difficult, the top and middle 1/4" chamber mounting bolts (3 PLC on each level) can be loosened to allow more movement.

15. Remove the bottom weigh chamber. Set the chamber and the base aside for future reference.
16. Disconnect the actuator limit switch cable. The connector for this cable is located on the break out box on the middle level. There is a lock on one side that needs to be released before removing.
17. Carefully lift the weigh pan up and out of the GrainGage.
18. Using the 3/16" Allen wrench or a #3 Phillips screwdriver, remove the load cell mounting bolts. Then remove the load cell.
19. Remove the two 3/16" Allen screws from the aluminum spacer attached to the load cell and re-install the spacer on the new load cell.

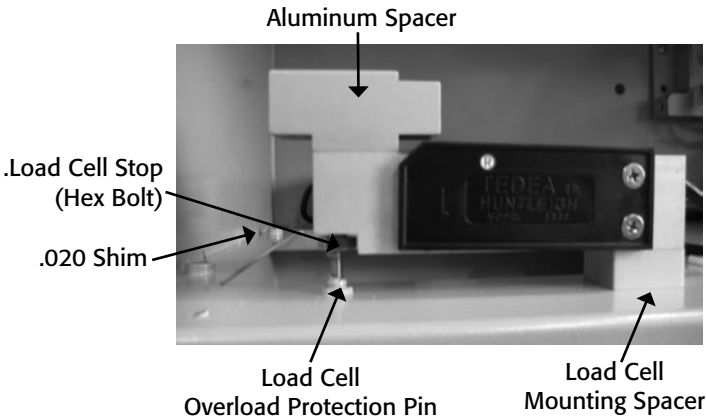
**Note:** Make sure the spacer is aligned with the edge of the load cell before tightening the bolts.

**Note:** Before re-assembling, clean all the screws with a fine wire brush. Use #242 Loc-Tite on all screws during reassembly (refer to Figure #3).

20. Remove the load cell stop (hex bolt) from the end of the load cell.

21. Install the load cell stop in the end of the new load cell until there is a 1/16" gap between the load cell and the hex head. Use #242 Loc-Tite when reassembling.
22. Disconnect the old load cell cable and secure the new load cell cable in its place (use plastic ties to hold the cable away from the weigh pan).
23. Place Loc-Tite on the two load cell mounting bolts and install the new load cell on top of the load cell mounting spacer. Make sure the load cell protection pin is centered under the load cell stop bolt.

**WARNING:** Make sure the load cell stop is not touching the overload protection pin when tightening the load cell mounting bolts as this may cause the load cell to stretch or overload.



**Figure 8-4: Load Cell**

23. Adjust the overload protection pin down (or load cell stop up if the pin will not adjust) until you can just slide the 0.20 shim between the overload protection pin and

load cell stop. The shim should slide out with between 0.010 and 0.020 voltage change on the display of the Field Computer in the “Diagnostics” menu.

**Note:** Make sure the protection pin and load cell stop are securely in place with #242 Loc-Tite.

24. After the load cell is completely installed, use the following procedures to check that the load cell is functioning properly:
  - a. Select “Load Cells” from the “Diagnostic” menu and make sure the voltage for the load cell you are testing is between 0.00 mV and +.150 mV (this is the zero offset).
  - b. Make sure all three load cells are plugged in and lock collars are secure.
  - c. Retare the weights.

**Note:** If the limit switches are enabled, you will need to press the ESC key three times to bypass the “Gate Obstruction” message.

- d. Write down the reading of the total weight of all three load cells (should be 0.00 lbs).
- e. Place an 8 lb. weight on each load cell and write down the total weight each time.

**Note:** The weight should be similar (8 lbs.) on each load cell and should repeat the same reading each time the weight is placed on it. When the weight is removed it should return to its same zero reading.

- f. Place an 11 lb. weight on each load cell and note the total weight each time.

**Note:** The total weight should not exceed 1.5 lbs. at any time. The overload protection pin should limit the weight on each load cell.

36. Install the weigh pan assemblies in reverse order of disassembly (starting with step 17 and working backward to step 1). Remember to place Loc-Tite on all mounting bolts.

**Note:** When installing the weight pan, skip step 13. You do not need to reinstall the shipping stops.

## GrainGage Chamber Installation

### Preparation

Following are the instructions for removing the chambers on the GrainGage and installing new chambers. During this process you will either be installing 3 liter chambers in place of 1.5 liter chambers or 1.5 liter chambers in place of 3 liter chambers. When removing your existing chambers make sure that you keep track of all the screws you remove because you will use these same screws when you install the new chambers. Typically this process takes about forty minutes.

### Tools Needed

- Medium Phillips screwdriver
- Medium flat head screwdriver
- 7/16" shallow socket (recommended) or 7/16" combination wrench

## Procedure

### *Removing the Existing Chambers*

Use the following steps to remove the existing chambers:

1. Remove the GrainGage door.
2. Using a Phillips screwdriver, remove the two screws holding the level detect sensor to the hopper on the top shelf. Rotate the sensor out of the way toward the back right corner.
3. Remove the side screws from the moisture sensor on the middle level using a Phillips screwdriver. Slide the moisture sensor out and place it out of the way.
4. Starting with the top level gate, slide the pneumatic actuator rod to the right until the pin connecting the actuator rod and the gate is directly over the access hole on the bottom of the shelf. Using the standard screwdriver, remove the E-ring from the actuator pin assembly. Remove the pin from the actuator and slide the actuator rod back toward the actuator. (If you remove the slides from the plastic housing, recognize that the top shelf slide is 2" shorter than the middle shelf slide.)
5. Repeat step 4 with the middle level gate.
6. Remove the 1/4" cap screws from the slide guides on both levels, and remove the guide.
7. Remove the three 1/4" cap screws from the plastic slide housing on both levels.

## Chapter 8

8. Lift the middle chamber up toward the top of the GrainGage and remove the middle level plastic slide housing from the shelf. Pull the chamber down and remove from the GrainGage.

**CAUTION:** Be careful not to put weight on the bottom chamber or the weigh pan. This may damage the load cells.

9. To remove the top chamber, repeat step 7 above (substituting “top” for “middle”).

### *Installing the New Chambers*

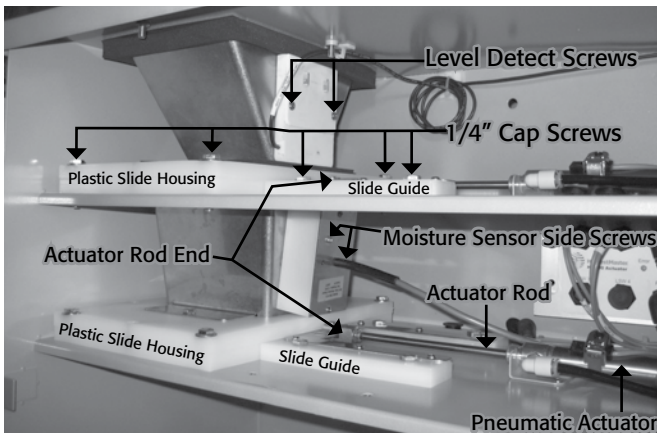
Use the following steps to install the new chambers:

1. Slide the top level chamber into place making sure it fits into the groove in the gasket.
2. Lift the top chamber up toward the top of the GrainGage and push the plastic slide housing into place beneath the chamber.
3. Repeat steps 1 and 2 to insert the middle chamber.

**CAUTION:** Be careful not to put weight on the bottom chamber or the weigh pan. This may damage the load cells.

4. Insert the three 1/4” cap screws into the holes on the plastic slide housing on each level and tighten them.
5. Place the plastic slide guides in place (use the inner holes for 1.5 liter chamber and the outer holes for 3 liter chamber). Insert the 1/4” cap screws into the holes and tighten them. Do this for both levels.

6. Starting with the middle level gate, slide the pneumatic actuator rod to the left until the hole for the pin is directly above the access hole. Slide gate to meet actuator rod end and replace pin. Snap E-ring back into place. Repeat this step for the top level gate.
7. Slide the moisture sensor into place. Insert the screws into the side holes on the moisture sensor and tighten them. (The screws for the moisture sensor are longer than the screws for the level detect sensor.)
8. Rotate the level detect sensor into place. Insert the screws and tighten them.
9. Replace the GrainGage door.



**Figure 8-5: GrainGage chamber**

If you have any maintenance questions, please contact a Juniper Systems Technical Service Representative at (435) 753-1881 or email them at [techsupport@junipersys.com](mailto:techsupport@junipersys.com).

### Return for Repair Procedure

In the event that your Harvest Data System needs repairs, contact a Juniper Systems Technical Service Representative for a Returned Materials Authorization (RMA) number.

Please have the following information ready when you call:

- Serial Number
- Model Number
- Name and Company/University/Agency
- Phone and Fax Numbers
- Clear description of problem
- Purchase Order Number and Billing Address

Under the Premium Support Agreement, HarvestMaster will ship you a replacement loaner Next Day Federal Express or UPS Red. To avoid any problems in the return procedure, complete the following steps:

1. Once you receive the loaner unit, package your equipment (if the existing box is still good) in the same box and ship it Federal Express, Next Day Air Mail, or UPS Red.
2. Fill out the shipping and RMA forms that were included with your loaner equipment and include a description of the failure. The more information you can supply concerning the malfunction and the circumstances under which it occurred, the quicker our technicians can complete the repair.

3. Package the unit properly to avoid shipping damage.
4. Write the RMA# on the package you ship.

Your equipment will be repaired and returned to you. After receiving your repaired equipment, you will be authorized a period in which to return the loaner unit before you will be billed for it. There is an annual service and support fee that allows you to have this service. Please call for detailed information and pricing.

# Chapter 8

# APPENDIX

Appendix A: Warranty

Appendix B: Mounting Diagrams

Appendix C: Cable Wiring Diagrams for the HM-401

Appendix D: Cable Wiring Diagrams for the HM-800

# **Appendix A**

## **Warranty**

---

### **Limited Warranty**

#### **Hardware**

All products manufactured by Juniper Systems, Inc. (Juniper Systems) when properly installed, calibrated, and operated in accordance with instruction manuals accompanying the hardware and used for the purpose for which the hardware was designed shall be free from defects in materials and workmanship for a period of one (1) year from the date of shipment.

In the event a defect in materials or workmanship is discovered and reported to Juniper Systems within the one-year period, Juniper Systems will, at its option, repair the defect or replace the defective product. Juniper Systems' obligation hereunder will be limited to such repair or replacement.

The customer shall have the responsibility to ship the defective equipment to Juniper Systems with all cost of shipment prepaid. After repair or replacement Juniper Systems will, at their own expense, ship the replacement or repaired item back to the customer using the same type of carrier.

## **Software**

Software products that are designed by Juniper Systems for use with a hardware product and that are properly installed on that hardware product are warranted to the end user not to fail to execute their programming instructions due to defects in materials or workmanship for a period of one year from date of delivery.

If Juniper Systems receives notice of such defects during the one year warranty period, Juniper Systems shall, at its option, repair or replace the defective software media. Warranty is limited to repair or replacement of software media.

The warranties provided herein do not apply in the case of improper or inadequate maintenance or in the case of repair by any person not previously authorized in writing by Juniper Systems to do such maintenance or make such repairs.

These warranties likewise do not apply where the products have been operated outside the environmental specification of the product, where software products other than those specified by Juniper Systems have been used, or where attempts at software interface have been made by any person not previously authorized by HarvestMaster to perform such interfacing operations.

### **Disclaimer of Warranties**

The warranties set forth herein are in lieu of all other warranties of Juniper Systems, whether written, oral or implied. Juniper Systems makes no warranties regarding its products (hardware or software), including without limitation warranties as to merchantability, fitness for a particular purpose, any warranty arising from course of performance, course of dealing, or usage of trade whether any of the foregoing warranties are either expressed or implied.

Juniper Systems specifically makes no warranties as to the suitability of its products for any particular application. Juniper Systems shall in no event be liable for special, incidental, or consequential damages in connection with or arising out of the furnishing, performance or use of any product covered by this agreement whether such claim is based upon warranty (express or implied), contract, strict liability, negligence or otherwise.

### **Updates or Modifications**

Juniper Systems shall be under no obligation to update or modify its products except as herein noted to correct program errors. Furthermore, the customer agrees that all representations and warranties contained herein shall be immediately null and void in the event of any modification, alteration or change in or to any product affected by or on behalf of the customer except for a change made by Juniper Systems.

## **Removal of Serial Number**

Removal of the Juniper Systems serial number label from an instrument will void any warranty on the said instrument. Juniper Systems will not repair or update an instrument and return it to an individual if the instrument is without the said serial number label.

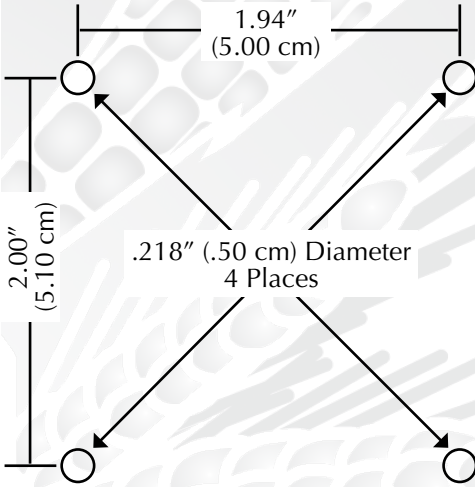
## **Extended Warranties**

Juniper Systems offers a variety of warranty options to extend coverage beyond the standard warranty. You can contact Juniper Systems Customer Service Department for details at (435) 753-1881 (6 am - 5 pm MST, Mon-Fri).

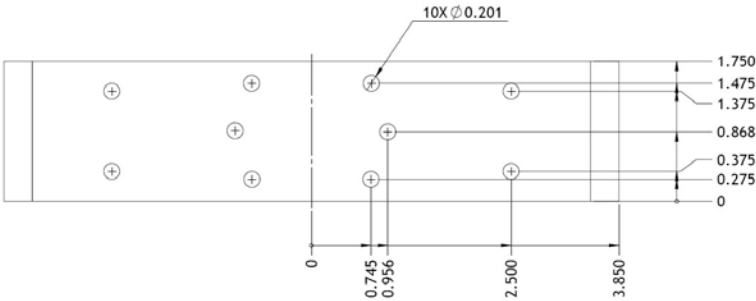
# Appendix B

## Mounting Diagrams

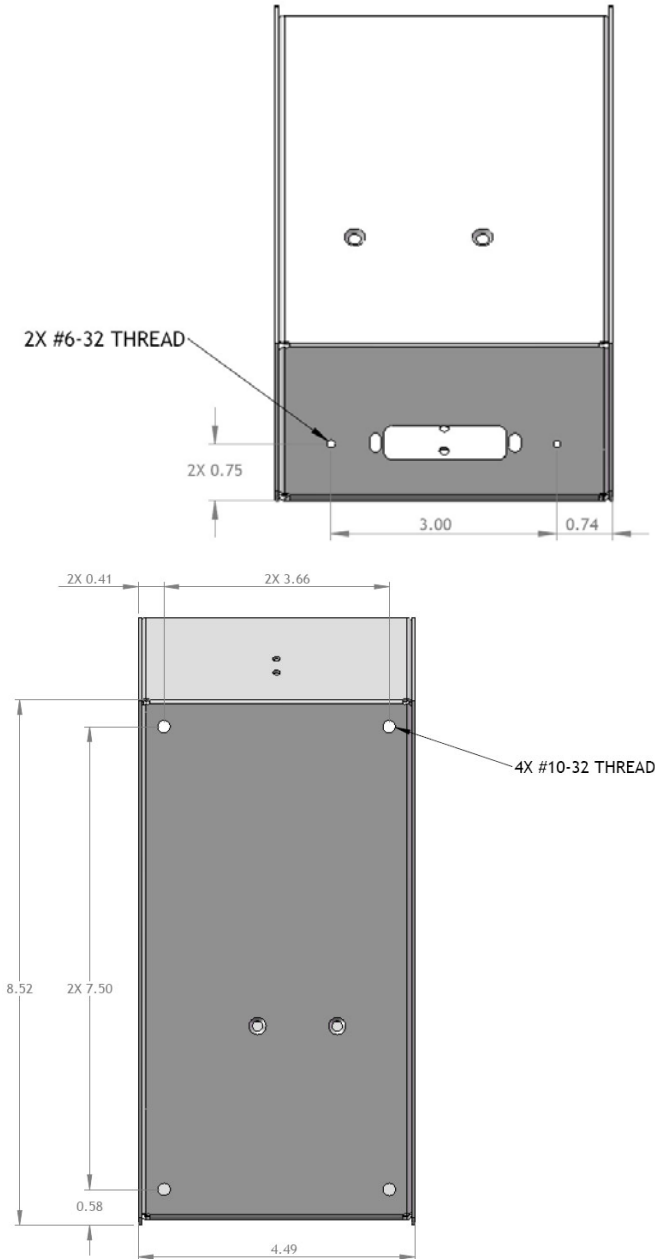
This diagram shows placement for mounting the Field Computer cradle.



Below is pictured the system console mounting diagram.

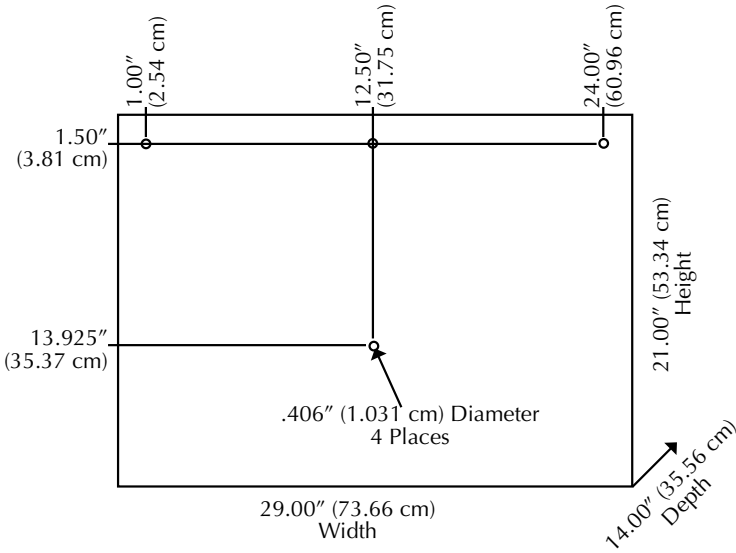


The next two diagrams are for mounting the printer.



# Appendix

The following diagrams are for mounting the Classic GrainGage.





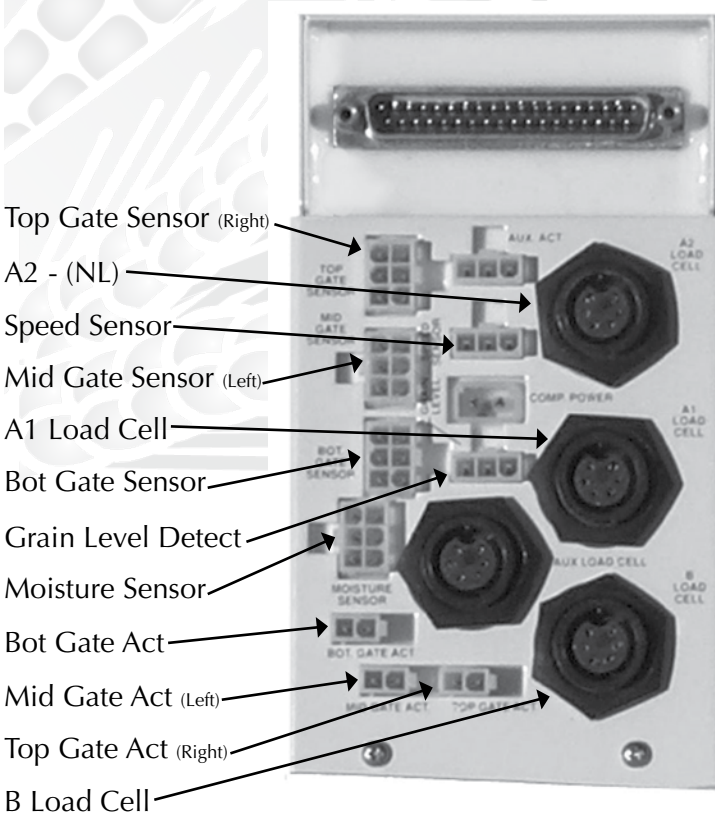
# Appendix C

## Cable wiring diagrams for the HM-401

---

### Breakout Box labels

#### *Breakout Box*

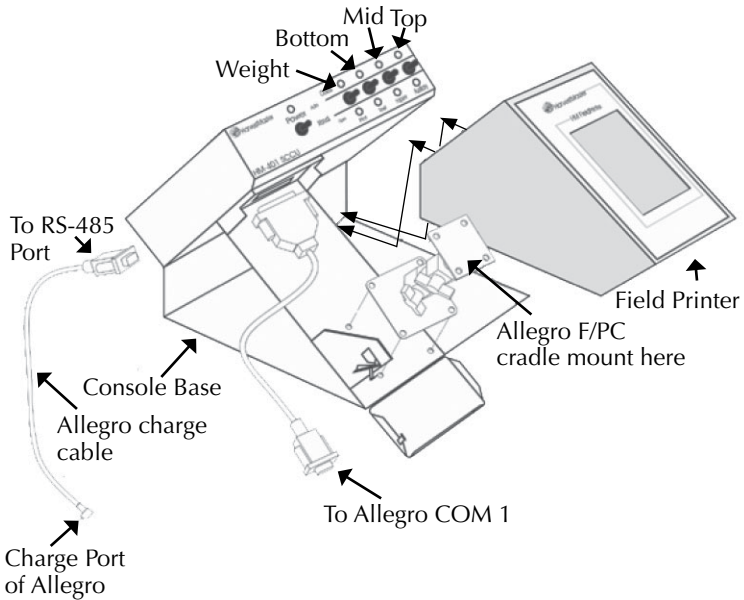


**Figure C-1: Breakout Box Labels**

**Note:** Each cable is labeled with two descriptions. One is the exact same label that is on the break out box.

## The Harvest Data System Console

### *Sensor Control and Conditioning Unit (SCCU)*



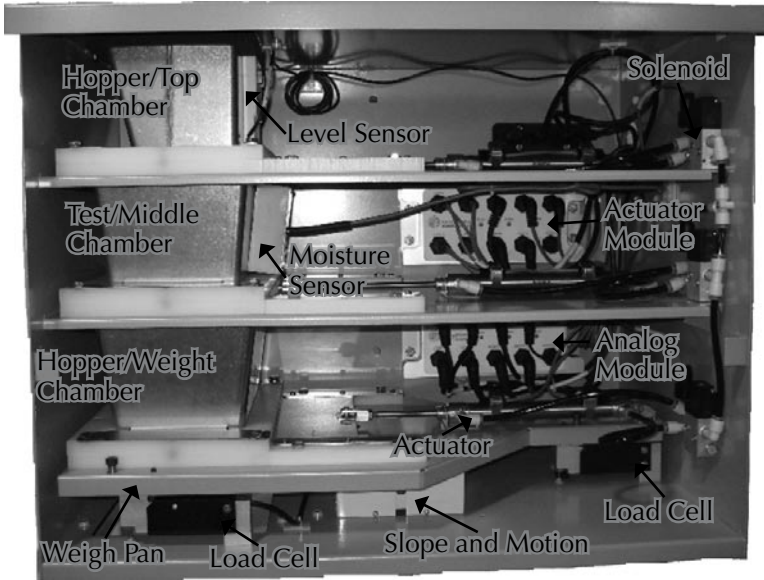
**Figure C-2: Cables connecting SCCU**

The Allegro and Harvest Data System Field Printer fit into the Harvest Data System console base.

The Field Printer is an optional component for convenient field use.

## **Supporting Hardware**

The Classic GrainGage is composed of the following hardware:



**Figure C-3: A Basic Classic GrainGage System**

### ***Actuator***

Actuator runs the mechanical functions of the hopper buckets.

### ***Level Detect***

Level Detect is used to measure grain level within hopper of the Classic GrainGage. The Level Detect sets the point that the hopper cycles at during harvest.

### *Air Shut-off Valve*

Air Shut-off Valve shuts off the airflow in the Classic.

### *Breakout Box*

Breakout Box connects to the SCCU enabling the harvesting functions of the Classic.

### *Slope and Motion Box*

Slope and Motion Box is a patented sensor used to decrease errors caused by combine vibrations or when harvesting on slopes. This results in increased accuracy of the weight readings. The Slope and Motion box is enabled via software and has a hardware-shipping stop.

### *Plot/Weight Bucket*

Plot/Weight Bucket contains a moisture blade for collecting weight and moisture readings from the hopper buckets, which are filled during harvesting.

### *Moisture Blade*

Moisture Blade is a sensor used to measure moisture and density (test weight) on the Classic GrainGage.

## **Cable Connection to the SCCU**

Connecting the system control cable and the power cable is the next step. The system control cable connects to the breakout box inside the Classic.

### System Control Cable Connection

The system control cable ends in a 37-pin connector on both ends. Plug one end into the back of the SCCU and the other end into the top of the breakout box.

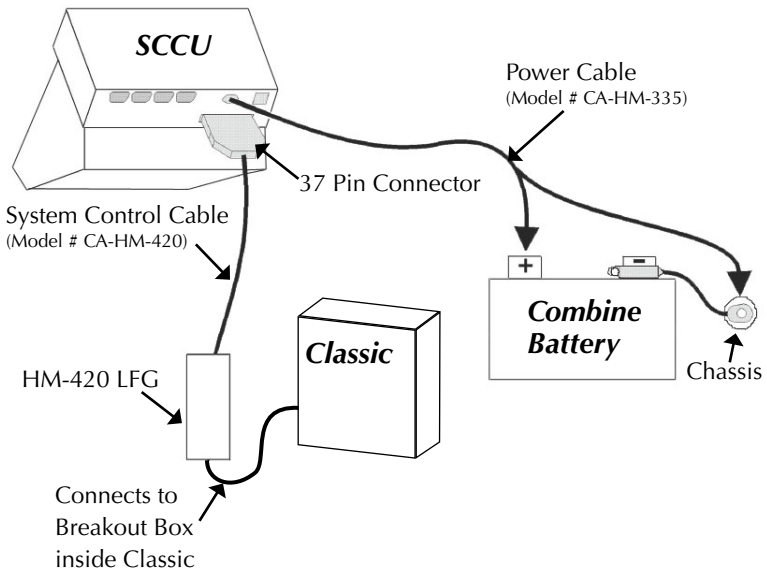
1. Using wire ties, tie the cable in place on the combine to help protect them from possible damage.
2. Twist the thumbscrews on the connectors to secure the 37-pin connectors to the SCCU and the breakout box.

### Power Cable Connection

To connect the power cable, complete the following steps:

1. Attach the pigtail end of the power cable to the combine battery (12V power supply). It is recommended to connect the negative side of the power cable to the end of the ground cable furthest away from the battery (connected to the chassis—refer to figure on the next page). If your system is equipped with a lockout system, this eliminates any potential problems.
2. Plug the power supply cable into the SCCU, and twist the locking ring to secure the connector to the SCCU.
3. If you haven't done so already, attach the Allegro DC power plug to the Allegro's charge port.

You need to make sure the polarity of the positive and negative battery terminal are wired correctly. Reversing the polarity could cause possible hardware damage. Also, the 12V power supply wire is red or white (+). The ground wire is black (-).



**Figure:C-4: Cable Connectors for the SCCU.** This shows the connector for the system control cable and the plug for the power cable.

## HM-420 37-pin System Control Cable

In a standard system control cable there are:

Four pairs of shielded cables

- Four 20 AWG twisted pairs
- Nine 24 AWG single wires
- Three 22 AWG twisted pairs
- Two 22 AWG single wires
- Four 24 AWG single drain wires for the shielded twisted pairs

## Connector Wire Codes - Standard

<i>Pin</i>	<i>Wire Name</i>
1	bottom gate actuator (+)
2	bottom gate actuator (-)
3	middle gate actuator (+)
4	middle gate actuator (-)
5	top gate actuator (+)
6	top gate actuator (-)
7	bottom gate "open" sense
8	bottom gate "closed" sense
9	middle gate "open" sense
10	middle gate "closed" sense
11	moisture sensor excitation (12V reg.)
12	moisture sensor control
13	moisture sensor shield
14	load cell signal (B+)
15	load cell signal (B-)
16	load cell "B" shield
17	load cell "B" excitation (+)
18	load cell "A1+A2" shield
19	load cell "A1+A2" excitation (+)
20	vehicle sense
21	grain level sense
22	sensor ground
23	compressor relay (+)

24	compressor relay (-)
25	accelerometer ground (-)
26	accelerometer excitation (+)
27	top gate "open" sense
28	top gate "closed" sense
29	accelerometer signal (+)
30	accelerometer shield
31	accelerometer signal (-)
32	moisture sensor signal (+)
33	moisture sensor signal (-)
34	load cell "B" ground
35	load cell signal (A+)
36	load cell signal (A-)
37	load cell "A1+A2" ground

### *Helps*

- Pins 1-6 and 23-24 are 20-gauge outer wires for actuator drivers.
- Shielded pairs for sensors are on pins 14 and 15, 32 and 33, 35 and 36, and 29 and 31.

## **Load Cell Connector Wiring**

These cables come pre-wired. The following information on wiring configurations is included for reference only.

### **“A1 and A2” Load Cell (Left Front and Left Back)**

<i>System Control Cable Pin #</i>	<i>Signal Name</i>	<i>Box Pin #</i>
35	load cell “A1 and A2” signal (+)	3
36	load cell “A1 and A2” signal (–)	4
19	load cell “A1 and A2” excitation (+)	1
37	load cell “A1 and A2” ground (–)	5
18	load cell “A1 and A2” shield no connection	6 2

### **“B” Load Cell (Right)**

<i>System Control Cable Pin #</i>	<i>Signal Name</i>	<i>Box Pin #</i>
14	load cell “B” signal (+)	3
15	load cell “B” signal (–)	4
17	load cell “B” excitation (+)	1

34	load cell "B" ground	5
16	load cell "B" shield	6
	no connection	2

### **Level Detect Wiring**

<i>System Control Cable Pin #</i>	<i>Signal Name</i>	<i>Box Pin #</i>
11	level detect excitation	1
22	level detect ground	2
21	level detect signal	3

### **Moisture Sensor Wiring**

<i>System Control Cable Pin #</i>	<i>Signal Name</i>	<i>Box Pin #</i>
32	moisture sensor signal (+)	3
33	moisture sensor signal (-)	4
12	moisture sensor control	5
11	moisture sensor excitation (12V reg.)	1
13	moisture sensor shield & ground	6
	No connection	2

## Slope and Motion Connector Wiring

<i>System Control Cable Pin #</i>	<i>Signal Name</i>	<i>Box Pin #</i>
29	slope & motion signal (+)	3
31	slope & motion signal (-)	4
26	slope & motion excitation	1
25	slope & motion ground	5
30	slope & motion shield	6
	no connection	2

## 25-pin Host Port

This cable comes pre-wired. The following information on wiring configurations are included for reference only.

<i>9-pin Socket</i>	<i>Signal Name</i>	<i>25-pin socket</i>
1	N/C	
2	RXD (red)	2
3	TXD (green)	3
4	DTR	20
5	GND	7
6	DSR	6
7	RTS	
8	CTS	
9	N/C	

## RS-232 Expansion Ports

These cables come pre-wired. The following information on wiring configurations is included for reference only.

### Barcode Wand

<i>SCCU 9-pin Socket</i>	<i>Signal Name</i>
1	External Switch Input
2	Wand RXD
3	TXD
4	DTR
5	GRD
6	N/C
7	Wand RTS
8	Wand CTS
9	+5VM

### Printer

<i>SCCU 9-pin Socket</i>	<i>Signal Name</i>	<i>25-pin Socket</i>
1	N/C	1
2	RXD	3
3	TXD	2
4	12 VSB	9
4	12 VSB	25
5	Printer Ground	7
5	Printer Ground	12
6	Printer Take-up	10
7	RTS	4
8	CTS	5
9	N/C	

# Appendix

## HVD

<i>SCCU 9-pin Socket</i>	<i>Signal Name</i>
1	N/C
2	RXD
3	TXD
4	+12 VBSP
5	Ground
6	N/C
7	N/C
8	CTS
9	+5VM

## RS-485

<i>SCCU 9-pin Socket</i>	<i>Signal Name</i>
1	N/C
2	RS485 Low
3	RS 485 High
4	+12 VBSP
5	Ground
6	N/C
7	N/C
8	N/C
9	N/C



# Appendix D

## Cable Wiring Diagrams for the HM-800

---

### Cable Connections for HM-800

Within the HM-800 there are several components. Figure D-1 shows the components wired on the stand.



*Figure D-1: Front view of HM-800 components*

Figure D-2 shows the cable connections from the HM-800 System Console and modules to other components.















































