



HarvestMaster
by Juniper Systems, Inc.

Field Research Software

Note Taking



“The HarvestMaster handheld computer with FRS software is a product I’ve been looking for over 10 years. Finally, a product specifically geared for agricultural field research that improves data collection speed, efficiency and reliability.”

—Bruce Branham
University of Illinois

Designed with input from agriculture researchers, Field Research Software™ (FRS) is a powerful, modular, Windows Mobile package targeted towards data collection on research plots. The foundation of FRS is *Note Taking*; other modules include *Harvest* to collect data on the combine.

FRS *Note Taking* is used to collect observations on field research plots, nurseries, greenhouses, and other application with a plot grid layout. FRS is designed for Windows Mobile or CE. Net operating systems running on handheld computers such as the ultra-rugged Allegro MX and Allegro CX Field PCs.

The FRS *Note Taking* process provides all of the tools needed by a researcher to collect data on field plots. Maturity dates can be incremented or decremented from current date. Default trait values are added with one key press.

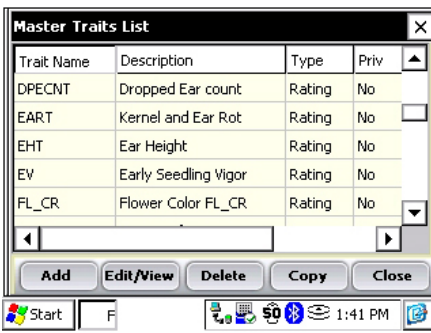
Other features include easy data transfer to and from the desktop computer facilitating interface to research software on the PC.

In the words of an agricultural researcher, “The HarvestMaster handheld computer with FRS software is a product I’ve been looking for over 10 years. Finally, a product specifically geared for agricultural field research that improves data collection speed, efficiency and reliability. Best of all, it allows us to collect data without restricting how we do it. The program is flexible enough that we can start anywhere in the trial and move serpentine or start at the beginning of each row.” Bruce Branham, Associate Professor, University of Illinois.



Applications

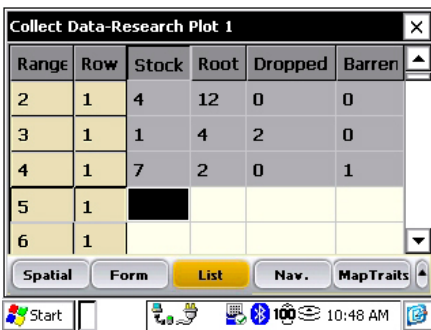
Field Plot Observations
Maturity & Flowering Notes
Nursery Management
Horticulture & Greenhouse
Tree Improvement Studies



PREPARE

Key Features

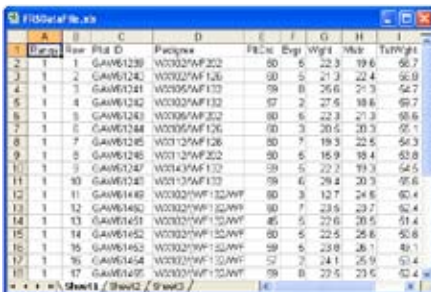
- Import or create field map along with unique plot identifiers from data analysis program
- Identifier names used with field map match names defined in analysis software
- Use one field map for data collection all year long
- Define traits to be collected through easy to use customized list
- Group common traits together to simplify setup



COLLECT

Key Features

- Select random, serpentine, or sequential navigation pattern
- Collect data from multiple observers
- Automatic entry of maturity and flower dates
- Input data via Form view or List (spread-sheet) view
- View pedigree or other specific identifiers



REPORT

Key Features

- Export trait data from entire year or latest collected data
- Export key identifiers along with trait data
- Data format are compatible with custom or third party analysis programs:

Prism—Central Software Solutions
 Agrobases—Agronomix Software, Inc.
 ARM—Gylling Data Management Inc.
 Other proprietary or custom programs



Windows Software

Windows Mobile Compatible
 Touch Screen with Large Fonts
 Multiple Collection Screens
 Easy Data Transfer



Plot Harvest Data Systems
Field Research Software
Rugged Field Computers
Mobile Agriculture GIS

Call for a demo
TEL 435.753.1881
FAX 435.753.1896
E-MAIL info@harvestmaster.com
WEB www.harvestmaster.com