

# INSTRUCTION MANUAL



## *Device Configuration Utility* *(DevConfig)*

Version 1.2

Revision: 5/05

Copyright (c) 1999 - 2005  
Campbell Scientific, Inc.



# ***License for Use***

---

This software is protected by both United States copyright law and international copyright treaty provisions. The installation and use of this software constitutes an agreement to abide by the provisions of this license agreement.

You may make a copy of this software on a second computer for the sole purpose of backing-up CAMPBELL SCIENTIFIC, INC. software and protecting your investment from loss. This software may not be sold, included or redistributed in any other software, or altered in any way without prior written permission from Campbell Scientific. All copyright notices and labeling must be left intact.



# ***Limited Warranty***

---

CAMPBELL SCIENTIFIC, INC. warrants that the installation media on which the accompanying computer software is recorded and the documentation provided with it are free from physical defects in materials and workmanship under normal use. CAMPBELL SCIENTIFIC, INC. warrants that the computer software itself will perform substantially in accordance with the specifications set forth in the instruction manual published by CAMPBELL SCIENTIFIC, INC.

CAMPBELL SCIENTIFIC, INC. will either replace or correct any software that does not perform substantially according to the specifications set forth in the instruction manual with a corrected copy of the software or corrective code. In the case of significant error in the installation media or documentation, CAMPBELL SCIENTIFIC, INC. will correct errors without charge by providing new media, addenda or substitute pages.

If CAMPBELL SCIENTIFIC, INC. is unable to replace defective media or documentation, or if CAMPBELL SCIENTIFIC, INC. is unable to provide corrected software or corrected documentation within a reasonable time, CAMPBELL SCIENTIFIC, INC. will either replace the software with a functionally similar program or refund the purchase price paid for the software.

The above warranties are made for ninety (90) days from the date of original shipment.

CAMPBELL SCIENTIFIC, INC. does not warrant that the software will meet licensee's requirements or that the software or documentation are error free or that the operation of the software will be uninterrupted. The warranty does not cover any diskette or documentation that has been damaged or abused. The software warranty does not cover any software that has been altered or changed in any way by anyone other than CAMPBELL SCIENTIFIC, INC. CAMPBELL SCIENTIFIC, INC. is not responsible for problems caused by computer hardware, computer operating systems or the use of CAMPBELL SCIENTIFIC, INC.'s software with non-CAMPBELL SCIENTIFIC, INC. software.

ALL WARRANTIES OF MERCHANTABILITY AND FITNESS FOR A PARTICULAR PURPOSE ARE DISCLAIMED AND EXCLUDED. CAMPBELL SCIENTIFIC, INC. SHALL NOT IN ANY CASE BE LIABLE FOR SPECIAL, INCIDENTAL, CONSEQUENTIAL, INDIRECT, OR OTHER SIMILAR DAMAGES EVEN IF CAMPBELL SCIENTIFIC HAS BEEN ADVISED OF THE POSSIBILITY OF SUCH DAMAGES.

CAMPBELL SCIENTIFIC, INC. IS NOT RESPONSIBLE FOR ANY COSTS INCURRED AS A RESULT OF LOST PROFITS OR REVENUE, LOSS OF USE OF THE SOFTWARE, LOSS OF DATA, COST OF RE-CREATING LOST DATA, THE COST OF ANY SUBSTITUTE PROGRAM, CLAIMS BY ANY PARTY OTHER THAN LICENSEE, OR FOR OTHER SIMILAR COSTS.

LICENSEE'S SOLE AND EXCLUSIVE REMEDY IS SET FORTH IN THIS LIMITED WARRANTY. CAMPBELL SCIENTIFIC, INC.'S AGGREGATE

LIABILITY ARISING FROM OR RELATING TO THIS AGREEMENT OR THE SOFTWARE OR DOCUMENTATION (REGARDLESS OF THE FORM OF ACTION; E.G., CONTRACT, TORT, COMPUTER MALPRACTICE, FRAUD AND/OR OTHERWISE) IS LIMITED TO THE PURCHASE PRICE PAID BY THE LICENSEE.

# **Device Configuration Utility**

## **Table of Contents**

---

*PDF viewers note: These page numbers refer to the printed version of this document. Use the Adobe Acrobat® bookmarks tab for links to specific sections.*

<b>1. System Requirements and Installation</b> .....	<b>1-1</b>
1.1 Hardware and Software Requirements .....	1-1
1.2 CD-ROM Installation .....	1-1
1.3 DevConfig Operations and Backup Procedures .....	1-2
1.3.1 Backing Up Data.....	1-2
1.3.2 Loss of Computer Power .....	1-2
1.3.3 Restoring from Backup.....	1-3
<b>2. Using the Device Configuration Utility</b> .....	<b>2-1</b>
2.1 Overview .....	2-1
2.2 Main DevConfig Screen .....	2-2
2.3 Downloading an Operating System .....	2-3
2.4 Terminal Tab .....	2-4
2.5 The Unknown Device Type.....	2-6

### ***Appendix***

<b>A. Glossary of Terms</b> .....	<b>A-1</b>
-----------------------------------	------------





# Section 1. System Requirements and Installation

---

## 1.1 Hardware and Software Requirements

Device Configuration Utility (DevConfig) is a 32-bit program designed to run on Intel-based computers running Microsoft Windows operating systems. Recommended platforms for running DevConfig include Windows NT, Windows 2000, or Windows XP because they offer the most stable operating environments. DevConfig may also run on Windows 95, Windows 98, or Windows ME platforms if operations such as open screens are limited so as not to exhaust the operating system's resources. All installations require at least a Pentium II or equivalent processor, a minimum of 64 MB of RAM, and a minimum of 4 MB free space on the hard disk.

DevConfig also requires that TCP/IP support be installed on the PC.

## 1.2 CD-ROM Installation

---

**NOTE**

Some Campbell Scientific products automatically install DevConfig with their other components. These installation instructions are for a stand-alone installation of DevConfig.

---

The following instructions assume that drive D: is a CD-ROM drive on the computer from which the software is being installed. If the drive letter is different, substitute the appropriate drive letter.

1. Put the installation CD in the CD-ROM drive. The install application should come up automatically. Skip to step 3.
2. If the install does not start, then from the Windows system menu, select Start | Run. Type "d:\setup.exe" in the Open field or use the Browse button to access the CD-ROM drive and select the setup executable. This activates the DevConfig Installation Utility.
3. Follow the prompts on the screen to complete the installation. The installation will require a CD key. You will find this code printed on the original installation CD.

A shortcut to launch DevConfig is added to your computer's Start menu under Programs | DevConfig. If the default directories are used, DevConfig executable files and help files are placed in the C:\Program Files\CampbellSci\DevConfig directory.

Working directories will also be created under C:\Campbellsci for DevConfig's configurations and data files, user programs, and settings for the accessory applications and utilities.

## 1.3 DevConfig Operations and Backup Procedures

This section describes some of the concepts and procedures recommended for routine operation and security of the DevConfig software. If software and computer systems were perfect this section would not be necessary. However, since this software is required to run with predictable results in the real world on real computers, the following guidelines and procedures will be helpful in minimizing possible problems.

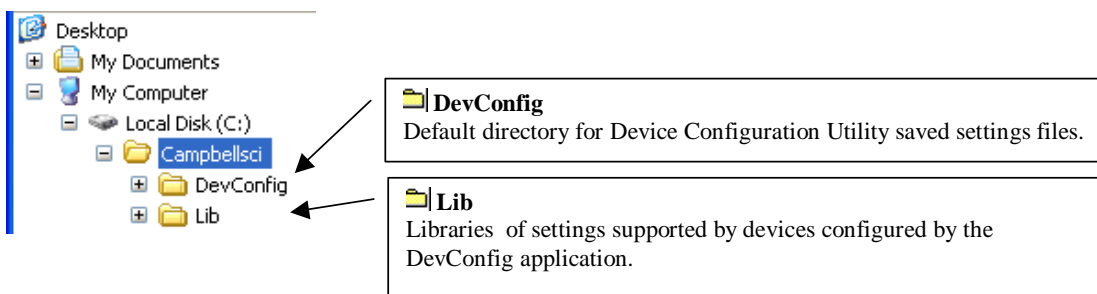
### 1.3.1 Backing Up Data

As with any computer system that contains important information, the data stored in the DevConfig data files should be backed up to a secure archive or transferred to another system on a regular basis. This is a prudent measure in case the hard disk crashes or the computer suffers some other hardware failure that prevents access to the stored data on the disk.

To back up the files, DevConfig must be closed to prevent the underlying communications engine from trying to access the files while they are being copied for the backup. Once the files have been backed up, DevConfig may be restarted.

The most direct approach is to close all Campbell Scientific software and back up the entire C:\Campbellsci working directory. The content of each of the subdirectories is summarized in the figure below. If default directories have been used, this will back up the data files and the working files for DevConfig's communications engine. Note that these directories assume that the installation used the default directory structure suggested by the install utility. If a different working directory was used, then the files will be contained in the same set of subdirectories, under the alternative main working directory.

By default, data files are stored to the c:\CampbellSci\DevConfig directory.



### 1.3.2 Loss of Computer Power

DevConfig writes to files in its \SYS directory during normal operations. These files may be open (or active) as long as data is being stored to the files.

If computer system power is lost while the DevConfig server is writing data to the active cache and configuration files, these files can become corrupted, making the files inaccessible. This is particularly a problem for Windows 95,

98 and ME platforms using FAT32 disk file formatting. Windows NT, 2000, and XP offer the choice of NTFS disk file formatting that provides a greater protection for this type of event. Thus, Windows NT, 2000, and XP offer more robust operation.

While loss of power won't always cause a file to become corrupted, having files backed up as described above will allow you to recover if a problem does occur. If a file does get corrupted, all of the working files need to be restored from backup to maintain internal synchronization.

### **1.3.3 Restoring from Backup**

To restore DevConfig operation from a backup copy of the data and configuration files, you must close DevConfig and any associated applications. You can then copy and replace the files in DevConfig's working directory with the files from the backup. Any data collected or changes made to the network since the last backup will be lost. Once all the files have been copied, you can restart DevConfig.



# Section 2. Using the Device Configuration Utility

---

*This section provides information on the Device Configuration Utility (DevConfig), a stand-alone application launched by its own program shortcut. DevConfig is used to set various settings, especially PakBus settings, on dataloggers as well as some communications peripherals.<sup>1</sup>*

## 2.1 Overview

The Device Configuration Utility (DevConfig) sets up dataloggers and intelligent peripherals before those devices are deployed in the field and before the devices are added to networks in Campbell Scientific datalogger support software such as LoggerNet or PC400. Some key features of DevConfig include:

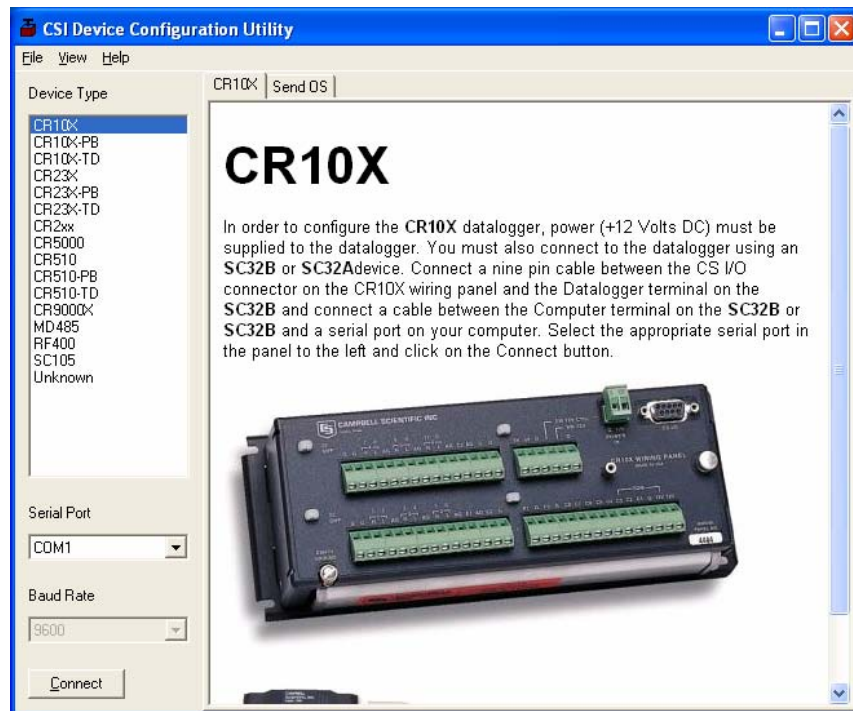
- To keep the process as simple as possible, DevConfig only supports direct serial connections between the PC and devices.
- LoggerNet or PC400 must be closed if you are running DevConfig. Having LoggerNet or PC400 open will prevent communication with a device.
- DevConfig can not only send operating systems to supported device types, but can also set datalogger clocks and send program files to dataloggers.
- DevConfig allows you to determine operating system types and versions, which can be very useful in classic dataloggers<sup>1</sup>, such as the CR10X, where the operating system version in the datalogger is not known.
- DevConfig provides a reporting facility where a summary of the current configuration of a device can be shown on the screen and printed. This configuration can also be saved to a file and used to restore the settings in the same or a replacement device.

---

<sup>1</sup> A note on datalogger terminology – Edlog dataloggers are those built around the processor family used in CR10s, including the 21X, CR7, CR10, CR500, CR10X, CR510, and CR23X. Some of these, specifically the last three, use flash memory so that users can install alternative operating systems, such as mixed-array, table-data (TD), or PakBus (PB) operating systems. CRBasic dataloggers are built around a different processor family that uses a different programming language, known as CRBasic. These include the CR200/205, CR5000 and CR9000.

- Some devices may not support the configuration protocol in DevConfig, but do allow configurations to be edited through the terminal emulation screen.
- Help for DevConfig is shown as prompts and explanations on its main screen. Help for the appropriate settings for a particular device can also be found in the user's manual for that device.
- Updates to DevConfig are available from Campbell Scientific's web site. These may be installed over top of older versions.

## 2.2 Main DevConfig Screen



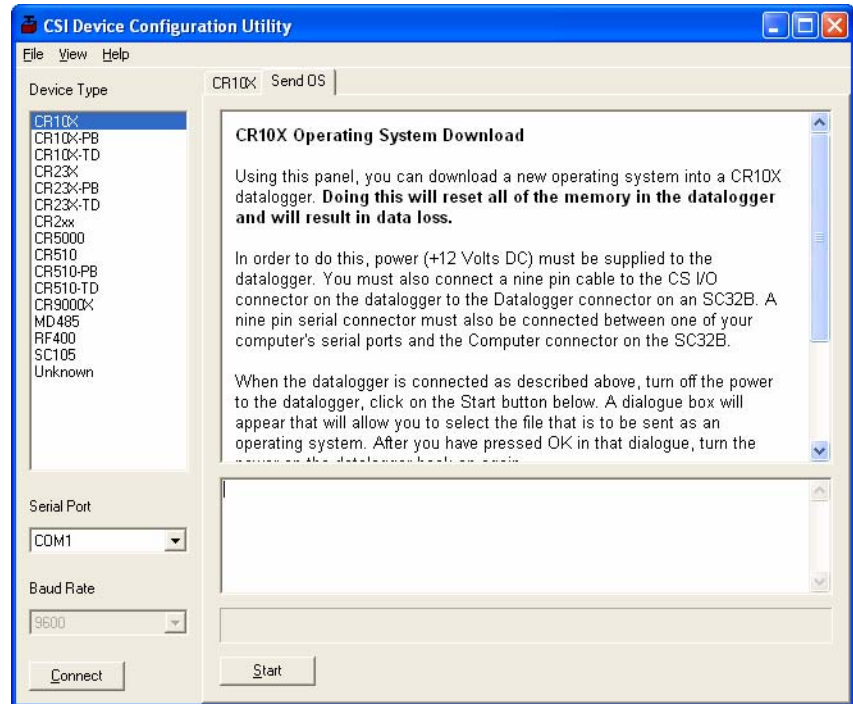
The DevConfig window is divided into two main sections: the device selection panel on the left side and tabs on the right side. After choosing a device on the left, you will then have a list of the serial ports (COM1, COM2, etc.) installed on your PC. You'll be offered a choice of baud rates only if the device supports more than one baud rate in its configuration protocol. The page for each device presents instructions about how to set up the device to communicate with DevConfig. Different device types will offer one or more tabs on the right.

When the user presses the Connect button, the device type, serial port, and baud rate selector controls become disabled and, if DevConfig is able to connect to the device, the button will change from "Connect" to "Disconnect". The tabs on the right side of the window will be replaced with tabs that represent the various operations that are available for that device in a connected state. These operations can vary from device to device.

Two common operations are sending a new operating system and communicating with a device in terminal emulation mode. These two operations are covered below. Refer to DevConfig's embedded help or the user manual for a device for more device-specific operations.

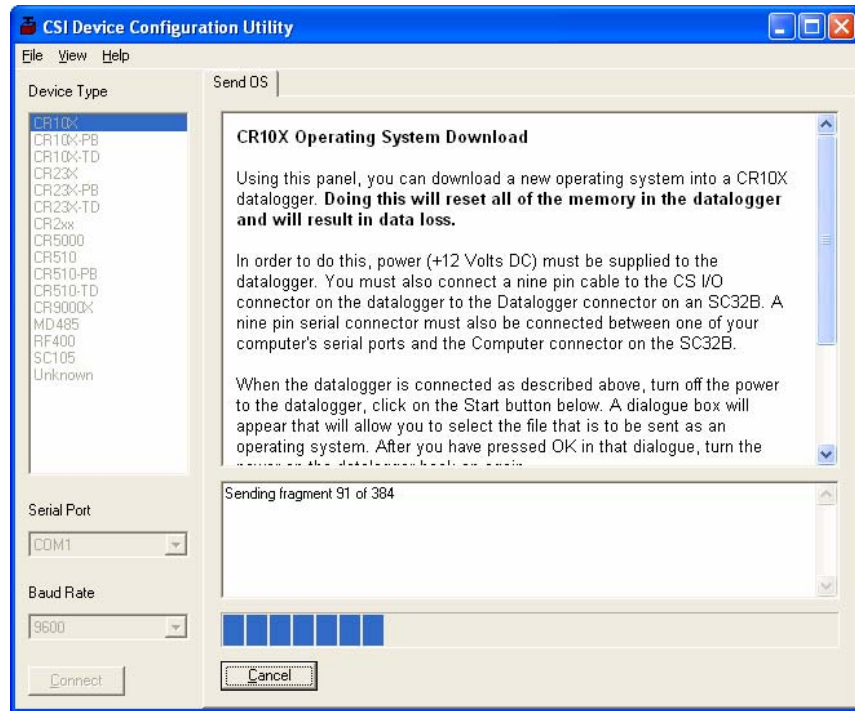
## 2.3 Downloading an Operating System

DevConfig can send operating systems from the send OS tab to all Campbell Scientific devices with flash replaceable operating systems. An example for the CR10X is shown below:



The text at right describes any interface devices or cabling required to connect the PC to the device. Screens for other devices vary only in the text on the right side. This screen differs from other screens that are available in DevConfig in that it can be accessed from either a connected and disconnected state.

When you click the **Start** button, DevConfig offers a file open dialog box to prompt you for the operating system file (usually a \*.obj file). You may be required to cycle power to the device or press a special “program” button. When the device issues the appropriate prompts, DevConfig starts to send the operating system:



When the operating system has been sent to the device, a message dialog will appear similar to the one shown below:



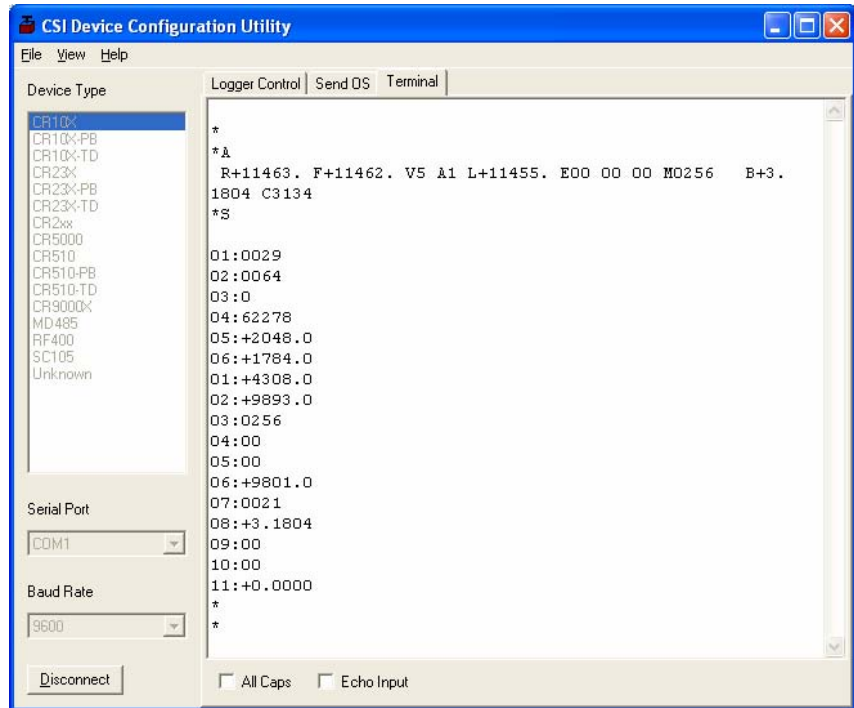
The information in the dialog helps to corroborate the signature of the operating system sent. For devices such as the CR10X (especially those with extended memory) that can take a long time to reset following an OS download, text warns you against interrupting the memory test.

## 2.4 Terminal Tab

The **Terminal** tab will be available when the application is connected to any device type that can be communicated with in a remote terminal mode. The Terminal tab offers a terminal emulator that can be useful in accessing settings or status information that are not exposed in other windows. For example, classic dataloggers with PakBus operating systems that are configured as routers contain routing tables that list the other PakBus nodes that are known to that datalogger. This routing table is only available through the \*D17 mode (see \*D descriptions in the datalogger’s operators’ manuals) using the keyboard/display or a terminal emulator. Another example is that the status table in mixed-array dataloggers (\*B) can also be accessed via an “S”



command in terminal mode. This status information can provide important data for troubleshooting purposes.

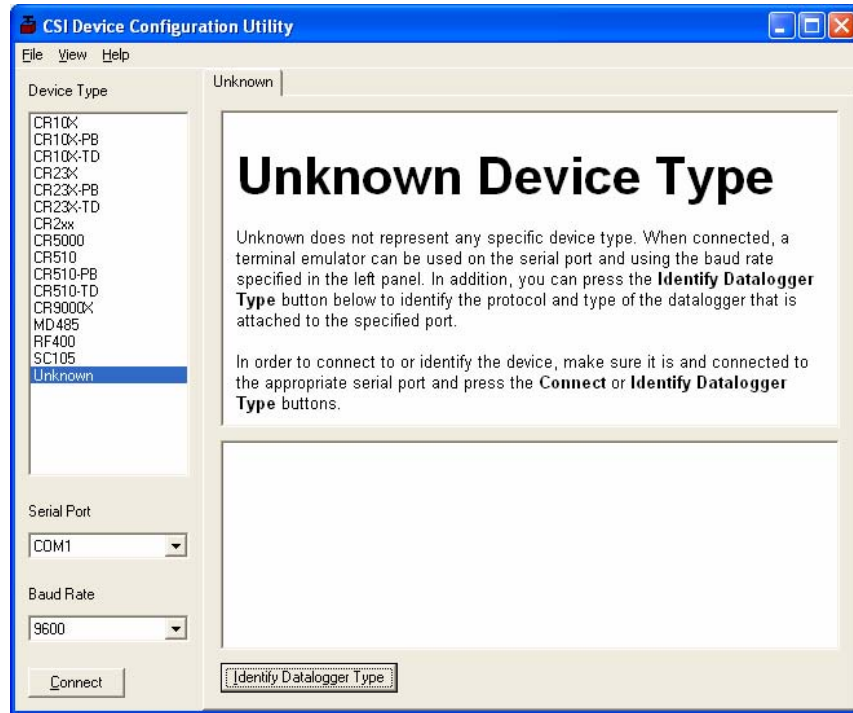


The default for the Terminal tab is to only show characters that are returned from the device. However, if the **Echo Input** check box is enabled, the screen will also display the characters actually typed by the user.

The **All Caps Check Box** controls whether the keyboard input will be forced to upper case before the characters are sent to the device. It will be disabled for some device types that require upper case input.

## 2.5 The Unknown Device Type

When the Unknown device type is selected, a panel will be shown in the tab control similar to that shown below:



Clicking **Connect** puts DevConfig into Terminal emulation mode on the Serial Port and at the Baud Rate selected.

When you click on **Identify Datalogger Type**, DevConfig will attempt to identify the type of device that is connected on the specified serial port. It will attempt to communicate using each of the datalogger protocols (mixed-array, table-data, and PakBus) in turn. If it fails to get any answer to any of these attempts, the baud rate will be automatically changed and the various protocols will be attempted again. When DevConfig recognizes the response from the device and the device type is one of the supported types, that device type will automatically be selected.

# ***Appendix A. Glossary of Terms***

---

## **A**

**Advise** – See Data Advise

**ASCII File** - A computer file containing letters, numbers, and other characters using the ASCII character encoding.

**Asynchronous** - The transmission of data between a transmitting and a receiving device occurs as a series of zeros and ones. For the data to be "read" correctly, the receiving device must begin reading at the proper point in the series. In asynchronous communications, this coordination is accomplished by having each character surrounded by one or more start and stop bits that designate the beginning and ending points of the information (see Synchronous). The transfer of information is not otherwise coordinated between the sender and receiver.

**Analog Channel** - A terminal on the datalogger's wiring panel where leads for analog signals are connected. The analog channels are designated single-ended (SE) or differential (DIFF) on the wiring panel. Many sensors, such as thermistor temperature probes and wind vanes, output analog signals.

**Array-based Datalogger** – See Mixed-array Datalogger.

## **B**

**Batch Files** - An ASCII text file that contains one or more DOS commands or executable file commands. When the batch file is run, the commands in the file are executed sequentially.

**Battery** - This entry in the status table returns the datalogger battery voltage.

**Baud** - The rate at which a communication signal travels between two devices.

**Binary File** - A file based on software defined formatting. A binary file can only be interpreted by the software programmed to decode the formatting. This format is used for more efficient data storage than is provided by ASCII.

**BMP (Block Mode Protocol)** – The communications protocol used by the server to communicate with table-based dataloggers and RF modems.

**Broadcast** – Part of the radio (RF) technique of polling remote radio modem datalogger sites. A single modem sends a message (broadcast) that all affected remotes hear and respond to.

## C

**Call-back** - When a datalogger is programmed for Call-back, it will automatically call the host computer when a specified condition is met. The computer must be set up to look for such an incoming call.

**Call-back ID Number** - A three-digit number that is used to identify what datalogger has called the host computer. (Not available for Table-based dataloggers.)

**Cancel** - Choosing Cancel from a dialog box will typically ignore any changes made and close the box.

**Carrier** – An electrical signal used to convey data or other information. For example, radio and phone modems use carrier signals. Phone modems attempt to detect carrier when the call is placed. The red LED on the RF95T lights when the modem detects a carrier.

**Child Node** – See Node. A node that is accessed through another device (parent node). For example a remote radio frequency (RF) site is accessed through and a child of the base RF232T. All nodes are child nodes of the PC.

**Client** – a software application designed to connect to a server. Usually provides some type of user interface or data acquisition. Email programs running on individual PCs are typically client applications that connect to an email server program running on a computer at an Internet Service Provider to receive and send email messages.

**Coaxial cable** – Special type of cable with two conductors (center conductor and outer shield conductor). Classified by size, impedance, and loss characteristics. Used to connect MD9 modems and to connect radios to antennas.

**Collection** - (see Data Collection)

**COM Port** - A computer's serial communications port. Cables and other interface devices are connected between the computer's COM port and the datalogger.

**Communication Server** – The software (typically packaged as a DLL) that provides the communications functions within other software such as PC200W, PC400, or LoggerNet.

**Control Port** - Dataloggers have digital output ports that can be used to switch power to sensors such as the HMP35C relative humidity circuit or to control relays. These digital outputs are called Control Ports and are labeled C1, C2, etc., on the wiring panel. Control ports on some dataloggers can also be used as inputs to sense the digital (high or low) state of a signal, monitor pulse signals, control Synchronous Devices for Measurement (SDM), or used as data input/output connections for SDI-12 sensors.

**CoraScript** – A command line interpreter client to the LoggerNet server that allows the user access to many of the capabilities of the LoggerNet server using direct commands or programmed script files.

**CR10X-TD Family of Dataloggers** – Any of the Edlog dataloggers with table-data operating systems become “TD” dataloggers, including the CR10T, CR510-TD, CR10X-TD, and CR23X-TD.

**CRBasic** - The programming language used for CR200, CR5000 or CR9000 dataloggers. Short Cut or the CRBasic Editor are used to create program files for these dataloggers.

**CRBasic Datalogger** – A CR200/205, CR5000 or CR9000 datalogger. Sometimes referred to as “CRx000 dataloggers.”

**CRx000 Datalogger** – Generally, a CR200/205, CR5000 or CR9000 datalogger. More correctly referred to as “CRBasic dataloggers.”

## D

**Data Advise (Datalogger)** – A mutual agreement between the communication server and the datalogger about which tables are to be collected every time the datalogger is contacted. Based on the dataloggers table definitions.

**Data Advise (Server)** – an agreement between a client application and the communication server to provide specified data as it is collected by the server.

**Data Advise Notification** – The packet of data sent by the datalogger based on the Data Advise agreement.

**Data Cache** – The storage for data collected from the datalogger by the communication server. This data is stored in binary files on the hard disk of the computer where the server is running.

**Data Collection** - Getting a copy of the data stored in the datalogger and saving it in the communication server's data cache (compare to Data Retrieval).

**Data Point** - A data value that is sent to Final Storage as the result of an Output Instruction. A group of data points output at the same time makes up a record in a data table.

**Data Retrieval** – Sending a copy of the data from the communication server's data cache to a file, network, or data display (compare to Data Collection).

**Data Storage Table, Data Table** - A portion of the datalogger's Final Storage allocated for a particular output. Each time output for a given data table occurs, a new record is written to the table. The size of the table (in number of records) and when records are written to the data table are determined by the datalogger's Data Table Instruction (P84). The fields (columns) of the table are determined by the Output Processing Instructions that follow the Data Table Instruction.

**Data Table Instruction** - Instruction 84. Used to create a Data Table and to cause records to be written to the Data Table.

**DaysFull** – A field in the status table that shows the number of days before any of the tables using automatic record allocation are filled.

**DevConfig** – Short for “Device Configurator”, a software application that provides a graphical user interface to configure settings in dataloggers and communications peripherals. Available in PC400, LoggerNet, and as a stand-alone application from the Campbell Scientific website. (Supplants CSOS.EXE, PakCom, and stand-alone terminal emulators.)

**Differential Analog Input** - Some sensors have two signal wires and the measurement is reflected in the voltage difference between them. This type of sensor requires two analog connections. The channels marked DIFF on the datalogger wiring panel are used to connect differential sensors.

**DLD File** - An ASCII file that can be sent to program an Edlog datalogger. Dataloggers must be programmed to perform measurements, convert data to final units, and to save data for retrieval. Edlog is used to create these files that are saved to disk with a DLD file name extension. A program must be sent to the datalogger before the datalogger will begin to collect data.

## E

**Edlog** - Campbell Scientific's software application used to create new or edit existing datalogger programs. Edlog supports all of the programming capabilities in the dataloggers it supports. (Program generators such as Short Cut are necessarily more limited in the features they can support.)

**Edlog Datalogger** – Any of the dataloggers, 21X, CR7, CR10, CR500, CR10X, CR510, or CR23X. The default operating system for these dataloggers is a mixed-array configuration. Some of these, specifically the last three, can have alternative operating systems installed by users. These include mixed-array, table-data (TD), or PakBus (PB) operating systems.

**EEPROM** - Electrically erasable programmable read only memory; the memory CR10X-TD, CR510-TD, and CR23X-TD dataloggers use to store their operating system. A new operating system can be transferred to the datalogger using a special software package (see PROM and DevConfig).

**Execution Interval** - The periodic interval on which the datalogger program is run. The execution interval is sometimes referred to as the Scan Interval. For example, when an execution interval of 60 seconds is set, the datalogger will execute its program table every 60 seconds. Between executions the datalogger enters a sleep (quiescent) mode. This conserves battery power and creates predictable measurement intervals. The execution interval is synchronized with the datalogger's real-time clock.

**Execution Time** - The time required to execute an instruction or group of instructions. If the total execution time of a Program Table exceeds the table's Execution Interval, the Program Table will be executed less frequently than programmed. Each time this occurs, a Table Overrun occurs. Table Overruns are considered to be “errors” and are reported in the datalogger status information table.

**Excitation Channel** - Sensors utilizing electrical bridge circuits require a precise electrical voltage to be applied. The excitation channels, marked as E1, E2, etc., on the datalogger wiring panel, provide this required precision voltage.

## F

**Fault** – Message relating to network activity where repeated problems or errors have occurred. Repeated faults usually indicate a failure of some kind.

**F1** - In most instances, pressing the F1 key will provide context sensitive help for the highlighted object on the screen.

**Final Storage** - Final Storage is an area in the datalogger's memory where data is stored for collection to a PC. When you collect data from the datalogger you are collecting data from a Final Storage area or table.

**Flag** - Memory locations where the program can store a logical high or low value. These locations, called User Flags, are typically used to signal a state to another part of the program.

## G

**Ground Connection** - Most sensors require one or more ground connections in addition to excitation or signal inputs. Ground connections may serve any of several purposes:

- a reference for a single-ended (SE) analog voltage (use analog ground if available)
- a power return path (do NOT use analog ground for power return)
- a connection for cable shield wire to help reduce electrical noise (do not use analog ground for shield wires, also known as drain wires)

## H

**Highlight** – Text or objects can be highlighted, by positioning the cursor where you want the highlight to begin, holding the left mouse button, and dragging it across the words or group of objects to be highlighted. A single object can be highlighted, by clicking it once with the left mouse button. Highlighted items can then be edited or activated.

**Holes** – When using Data Advise, the communications server always gets the most recent data records, so if there are more records to be returned than can fit in one packet there can be sequences of older data available from the datalogger that have not yet been collected to the data cache. The server tracks and collects these holes only if that option is enabled. This entry in the status table shows the number of data points in missed records for the data storage tables in that station.

**Hole Collection** – The process used by the server to collect data records missing from the data cache but possibly still in the datalogger. If Hole Collection is delayed or disabled, the memory in the datalogger can ring around and overwrite the missing data records resulting in an Uncollectable Hole.

**Host Computer** - The machine where the communication server software is running.

## I

**INI Files** - Configuration files that are used to preserve the last known setups or states of a program or device.

**Initialization String** - A string of alphanumeric characters that are sent to a device, such as a modem, to prepare that device for communications.

**InLocs** - Abbreviation for "Input Locations". This entry in the status table shows the number of input locations allocated for the program.

**Input Location Storage** - Each time a measurement or calculation is performed the resultant value is stored in an Input (memory) Location, sometimes abbreviated as "InLoc."

**Input/Output Instructions** - Datalogger program instructions used to make measurements or send data automatically to other devices.

**Intermediate Storage** - Datalogger memory used to temporarily store values (such as a running total and number of samples for an average calculation), typically to be used for output calculations. The datalogger uses Intermediate Storage to accumulate sensor readings until output.

## L

**Link** – Communications route between two devices, for example the phone link between two phone modems.

**LDEP** – Logger Data Export Protocol, a protocol and client application that provides for data distribution from the communications server to a third party application through a standard TCP/IP socket. Installed with LoggerNet; see the associated PDF file for more information. Requires record-specific acknowledgements for record flow control. See LDMP.

**LDMP** – Logger Data Monitoring Protocol, a protocol and client application that provides for data distribution from the communications server to a third party application through a standard TCP/IP socket. Installed with LoggerNet; see the associated PDF file for more information. Requires very simple acknowledgements for record flow control. See LDEP.

**Log Files** - Text files that are stored on the computer's hard drive that record activity. They contain information about communications between the communications server and other devices in the datalogger network. Log files are typically used for troubleshooting purposes. LoggerNet has four types of log files: Transaction, Communications Status, Object State, and Low Level I/O. Refer to Appendix C or the help within the LogTool (in PC400 click the Tools | LogTool menu item) application for information on these log files.

## M

**MD9** - An MD9, or multi-drop modem, is a communications device that uses twisted pair cable for connection. Typically, the system consists of one MD9 base modem that is attached to the user's computer, with one or more remote



modems at the datalogger field site. One remote modem is needed for each datalogger at the field site.

**Measurements** – Values stored by the datalogger in an Input Location after reading an electronic signal from a sensor and converting the raw signal into meaningful units.

**Mixed-array Datalogger** – Dataloggers with mixed-array operating systems save output in a common area of the datalogger's final storage memory. When data is directed to final storage, a unique array ID number is stored, followed by other values as determined by the datalogger program. These are called "elements". "Mixed-array dataloggers" typically save all information that is directed to output storage to the same area of datalogger memory (as opposed to table-based dataloggers that always store different output processing intervals to separate tables in datalogger memory). Data retrieved by the PC must be processed by PC software to separate the data based on the array IDs.

**Modem** – From “modulator-demodulator”; a device used to transmit and receive digital data over normally analog communications lines, such as an audio signal on telephone circuits. A modem attached to a computer performs a digital-to-analog conversion of data and transmits them to another modem that performs an analog-to-digital conversion which permits its attached computer to use the data.

## N

**Net Description** – Description of dataloggers and communications devices that form the datalogger network. Created using the EZWizard in PC400 or Setup screen in LoggerNet to communicate with the various dataloggers.

**Node** – Part of the description of a datalogger network. Each node represents a device that the communications server will dial through or communicate with individually. Nodes are organized as a hierarchy with all nodes accessed by the same device (parent node) entered as child nodes. A node can be both a parent and a child node.

## O

**ObjSrlNo** - This entry in the status table provides the revision number of the datalogger PROM.

**Output Interval** - The output interval is the interval at which the datalogger writes data to Final Storage. The output interval is defined by Instruction 84 in Edlog (for table-based dataloggers) or the instructions that set the output flag high in mixed-array dataloggers.

**Output Processing** - Writing to final storage memory a sample or summary statistic of data measurements. Output processing options include sending a sample, average, maximum, minimum, total, or wind vector of data to Final Storage. Each Output Processing data value is kept in a separate location within the datalogger. This allows multiple output processing for each measurement. For example, you can average air temperature over a 60-second interval, a one-hour interval, and a 24-hour interval. See the operator's manual

or programming software for output processing options available for each datalogger model.

**Overflow Errors** - Overflow errors occur when the actual program execution time exceeds the execution interval. This causes program executions to be skipped. When an overflow error occurs, the Table Overflow parameter in the datalogger's status table is incremented by 1.

**Overruns** - This entry in the status table provides the number of table overruns that have occurred. A table overrun occurs when the datalogger has insufficient time between execution intervals to complete one pass through the program. This counter is incremented with each table overrun.

## P

**Packet** – a unit of information sent between two BMP or PakBus devices that are communicating. Each packet can contain data, messages, programming, etc. Usually contains addressing and routing information.

**PakBus** – A packet-based and packet-switched networking protocol used by newer dataloggers. PakBus allows for robust transmission of commands and data, dynamic routing between PakBus devices, and peer-to-peer communications (such as when one datalogger needs to control another datalogger without involving the PC).

**Parameter** - Number or code which helps to specify exactly what a given datalogger instruction is to do.

**Path** – The modems, or other devices that make up a link to communicate with a remote site datalogger.

**Polling** – Process where a datalogger or other communications device is periodically checked for any packets it needs to send. The server polls dataloggers for most communications links. Some communications devices, such as RF232T radio bases or repeaters can also poll datalogger sites.

**Polling Interval** – The user-specified interval that determines when to poll a given device.

**PrgmFree** - An entry in the status table that shows the amount of remaining program memory, in bytes.

**PrgmSig** - An entry in the status table that shows the signature of the datalogger program. The signature is a unique number derived from the size and format of the datalogger program.

**PromID** - An entry in the status table that shows the version number of the datalogger PROM or OS.

**PromSig** - An entry in the status table that shows the signature of the datalogger PROM or OS. As with the PrgmSig, if this signature changes, the datalogger instruction set has somehow been changed.

**Processing Instructions** - Datalogger instructions that further process input location data values and typically return the result to Input Storage where it can be accessed for output processing. Arithmetic and transcendental functions are included in these instructions.

**Program Control Instructions** - Datalogger instructions that modify the sequence of execution of other instructions in the datalogger program; also used to set or clear user flags.

**Program Signature** - A program signature is a unique value calculated by the datalogger based on program structure. Record this signature in a daily output to document when the datalogger program is changed.

**Program Table** - The area where a datalogger program is stored. Programming in Edlog dataloggers can be separated into two tables, each having its own execution interval. A third table is available for programming subroutines that may be called by instructions in Tables 1 or 2. Programming in CRBasic dataloggers can be separated into different "scans". The length of the program tables or scans is constrained only by the total memory available for programming.

**PROM** - Programmable Read-Only Memory - integrated circuit chips that are used to store the Operating System (OS) in the CR10T datalogger and some other communications peripherals. The PROM can be replaced to install a new operating system (also see EEPROM).

**Pulse Channel** - Some sensors output voltage pulse signals. Such sensors can be connected to Pulse Channels for measurement (labeled as P1, P2, etc., on the datalogger's wiring panel).

## Q

**Quiescent Mode** - Often referred to as "sleep mode" - a low power state between program execution intervals.

## R

**Real-Time Clock** - All dataloggers have an internal clock. The date and time information from this clock are used in the time stamp for stored data. The datalogger's execution interval and timer are synchronized with the clock. Some Edlog dataloggers (CR10X, CR510, and CR23X) and all CRBasic dataloggers have battery backups that maintain the clock even when 12V power is not available.

**Record** - A group of data values output at the same time to the same data table. Records are written in response to the Data Table Instruction (84) in TD dataloggers or the DataTable declaration in CRBasic dataloggers. The individual fields within each record are determined by the Output Processing instructions following the instruction that created the data table.

**RecNbr** - An entry in a table that shows the sequential record number in the table.

**Remote Site** - Typically where a datalogger is located at the other end of a communications link. Also can refer to the site where a radio (RF) repeater is located.

**Repeater** - a radio (RF) site that relays packets of information to a remote site. Used to extend the range of radio transmissions. Most remote datalogger sites with radios can act as repeaters.

**Retries** – When a transaction or communication between two devices or programs fails, the transaction or communication can often be triggered to repeat until it succeeds.

**Retrieval** - (see Data Retrieval).

**RF** – Radio Frequency.

**RTDM** – Real Time Data Monitor software. A very sophisticated graphical data display application that gets data from either data files or the communication server's data cache. RTDM is a stand-alone application.

**RTMC** – Real Time Monitoring and Control software. A client application to the communications server that displays data from the server's data cache (only) and updates as new data is collected. RTMC is relatively easy to set up, and ships with LoggerNet.

**RTMS** – Real-Time Monitoring Software. A software application designed by Campbell Scientific for fast real-time data acquisition. RTMS included both communications and graphical display features and was designed for IBM's OS/2 PC operating system and replaced by LoggerNet, RTMC and RTDM.

## S

**Scan Interval** - See Execution Interval.

**SDI-12** - SDI-12 stands for Serial Digital Interface at 1200 baud. It is an electrical interface standard and communications protocol that was originally developed by Campbell Scientific and other manufacturers for the U.S. Geological Survey for hydrologic and environmental sensors. SDI-12 was designed to be a simple interface (ground, 12 volts, and signal) that improves compatibility between dataloggers and "smart" microprocessor-based sensors.

Other goals of the SDI-12 standard are:

- low power consumption for battery powered operation via the datalogger
- low system cost
- use of multiple sensors on one cable connected to one datalogger
- allow up to 200 feet of cable between a sensor and a datalogger

**Security Code** - A code entered into the datalogger either directly with a keypad or via the datalogger's program to prevent unauthorized access to datalogger settings, programs, and data.

**Server** – Also “communication server”, a software application that accepts connections from client applications and provides data or other information as requested. The LoggerNet server manages all the communications and data collection for a network of dataloggers. The collected data is made available for client applications. PC200W and PC400 also use the communication server but in a more limited configuration.

**Short Cut** – A program generator application that ships with PC400, LoggerNet, and is available as a stand-alone product from the Campbell Scientific website. Short Cut does not require knowledge of individual program instructions. Users need only know what kind of datalogger and sensors they're using and decide what output they require. Short Cut generates the program for them. (Contrast a “program generator” with the full-featured “program editors”, Edlog and CRBasic Editor.)

**Signature** – Number calculated to verify both sequence and validity of bytes within a packet or block of memory.

**Single-ended Analog Input** - Some analog sensors have only one signal wire. (They will also have another wire that can be grounded and that is used as the reference for the signal wire.) With this type of sensor, only one analog connection is required. Hence, it needs a "single-ended" or SE analog input. The single ended channels are marked as SE on the datalogger wiring panel.

**Socket Data Export** – a software application that connects to the LoggerNet server and provides a TCP/IP socket for a user created application to receive data records from the server data cache.

**Station** - A datalogger site is often referred to as a station.

**Station Number** – The LoggerNet server assigns and uses station numbers for routing packets to the dataloggers. These numbers can be modified using CoraScript. Not to be confused with datalogger serial numbers, PakBus addresses, or addresses set in communications peripherals such as RF or MD9 modems.

**Storage** - An entry in the status table that shows the number of final storage locations available.

**Synchronous** - The transmission of data between devices occurs as groups of zeros and ones. For the data to be "read" correctly, the receiving device must begin reading at the proper point in the series. In synchronous communications, this coordination is accomplished by synchronizing the transmitting and receiving devices to a common clock signal (see Asynchronous).

## T

**Tab Windows** - Some screens depict a series of related windows in a multi-tabbed notebook format. When you click the file folder tab, the information on the tab you chose will be displayed.

**Tables** - An entry in the status table that shows the number of user-created data tables. (See also Data Table.)

**Table-based Dataloggers** - Table-based dataloggers store each record of data that follows an output instruction in a table. Each separate occurrence of an output instruction directs the datalogger to store the data in a separate table. "Table-based" includes both "TD" table-data and "PB" PakBus versions of the Edlog dataloggers as well as the CRBasic dataloggers.

**Table Definitions** – List of data available from a table-based datalogger. The datalogger supplies this list on request. The tables are determined by the datalogger program. The LoggerNet server must have a current version of the table definitions to collect data from the datalogger.

**Time Stamp** - The date and time when data are stored in the datalogger.

**TMStamp** - An entry in the status table that shows the date and time the status information was recorded.

**Transaction** - The exchange of data or information between two devices or programs. For example, setting the clock in a datalogger requires a transaction between the server and the datalogger.

## U

**Uncollectable Hole** – Occurs when a hole in the data cache cannot be collected from the datalogger before the data table wraps around and the records are overwritten.

## V

**Variable Name** - Edlog uses variable names in expressions. Variables are another name for input location labels. For instance, in the equation  $\text{TempF} = (\text{TempC} * 1.8) + 32$ , TempC is an input location label and TempF is a new location calculated from TempC. CRBasic dataloggers use variables for all measurements, processing values, including variables to be used in Boolean form as “high” or “low”.

## W

**Wiring Panel** - The set of terminals and underlying circuits that enable connections of sensors, control and power supply wiring to the datalogger itself. Some dataloggers such as the CR23X have built-in wiring panels. Others, such as the CR10X, have removable wiring panels.

**Watchdog** - An entry in the status table that shows the number of watchdog errors that have occurred. The watchdog checks the processor state and resets it if necessary. If an error occurs, the watchdog error counter is incremented.



## **Campbell Scientific Companies**

---

### **Campbell Scientific, Inc. (CSI)**

815 West 1800 North  
Logan, Utah 84321  
UNITED STATES  
www.campbellsci.com  
info@campbellsci.com

### **Campbell Scientific Africa Pty. Ltd. (CSAf)**

PO Box 2450  
Somerset West 7129  
SOUTH AFRICA  
www.csafrica.co.za  
sales@csafrica.co.za

### **Campbell Scientific Australia Pty. Ltd. (CSA)**

PO Box 444  
Thuringowa Central  
QLD 4812 AUSTRALIA  
www.campbellsci.com.au  
info@campbellsci.com.au

### **Campbell Scientific do Brazil Ltda. (CSB)**

Rua Luisa Crapsi Orsi, 15 Butantã  
CEP: 005543-000 São Paulo SP BRAZIL  
www.campbellsci.com.br  
suporte@campbellsci.com.br

### **Campbell Scientific Canada Corp. (CSC)**

11564 - 149th Street NW  
Edmonton, Alberta T5M 1W7  
CANADA  
www.campbellsci.ca  
dataloggers@campbellsci.ca

### **Campbell Scientific Ltd. (CSL)**

Campbell Park  
80 Hathern Road  
Shepshed, Loughborough LE12 9GX  
UNITED KINGDOM  
www.campbellsci.co.uk  
sales@campbellsci.co.uk

### **Campbell Scientific Ltd. (France)**

Miniparc du Verger - Bat. H  
1, rue de Terre Neuve - Les Ulis  
91967 COURTABOEUF CEDEX  
FRANCE  
www.campbellsci.fr  
campbell.scientific@wanadoo.fr

### **Campbell Scientific Spain, S. L.**

Psg. Font 14, local 8  
08013 Barcelona  
SPAIN  
www.campbellsci.es  
info@campbellsci.es