

# MIRUS™

THE STANDARD IN FIELD DATA  
COLLECTION SOFTWARE



## Maximum Data Collection Performance

Now you can achieve the best data collection results possible using HarvestMaster's Mirus data collection software. Researchers will appreciate having multiple ways to view their data through easy-to-access screens and menus. Designed for use with Windows® laptops and tablets, its user interface features finger-friendly icons and easy-to-navigate menus. Mirus is the perfect software companion for industry standard HarvestMaster™ GrainGages®.



HarvestMaster™

1132 West 1700 North, Logan, Utah 84321 USA



## Simple and Efficient Workflow

Mirus gives operators the tools they need in one package. Importing and generating maps, collecting harvest and field observation data, and exporting finished data is all handled conveniently in the software. Calibration for weight, moisture, and test weight are easily completed with calibration wizards.

## Loads of Data at Your Finger Tips

Mirus is configured to show four separate information screens simultaneously during harvest. If you need to run a diagnostics check, look no further than the screen you are currently viewing for quick access, even while in harvest mode. For optimal productivity, data can be viewed graphically and spatially at the same time.

## Note-Taking Features Expanded

Use Mirus' note-taking feature throughout the growing season, from early spring to harvest time. Mirus allows you to easily take general notes as well as combine observations, to assure that your research is well-documented, with less effort on your part. Mirus also provides combine operators with an easy way to enter a Quick-Note on collected data, alerting researchers to examine the data for potential problems.

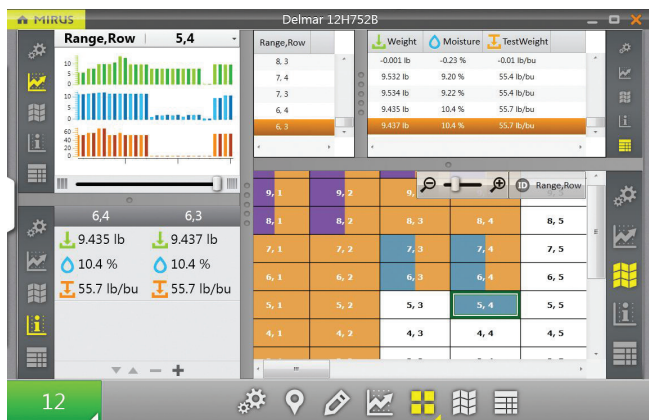
## Plugin Versatility

Mirus integrates easily with other technologies like near-infrared (NIR) instruments, printers, barcode readers, and nonstop harvest heads so your data collection processes can run as smooth as possible.

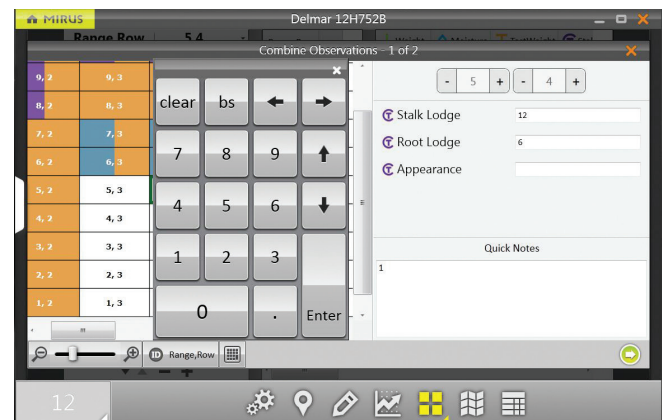
## Minimum System Requirements

- **Hardware:** HarvestMaster™ GrainGage® HM800 & H2 Series
- **Operating System:** Laptops and tablets; Windows® 10, 7 or 8
- **Processor:** Minimum 1.8Ghz dual core
- **Memory:** 1GB RAM (1GB or more recommended)
- **Data Storage:** 320MB
- **Display Resolution:** 800x600 or higher

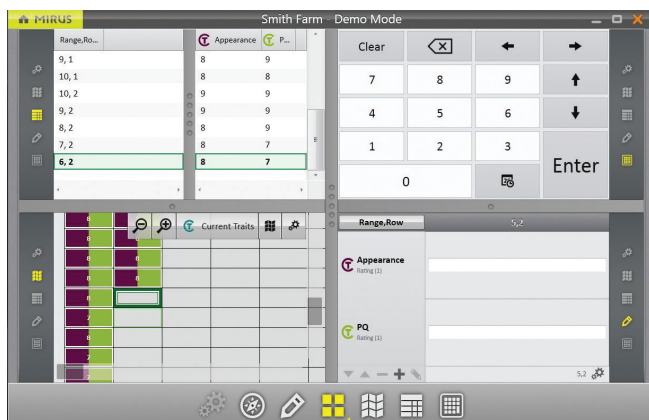
## Quad View



## Combine Observation



## Note-Taking



## Spatial Data View

